

ISSUE 38

4th Apr - 1st Jul 2022

element**14**

AN AVNET COMPANY

Connect

nz.element14.com/connect-magazine

KEEP PACE WITH AN EVER CHANGING MARKET

Access the latest technologies with
our extensive range from industry
leading manufacturers

Order Now

0800 90 80 80

nz-sales@element14.com

09
Pico Technology

18
Demystifying AI and ML
with embedded devices

26
Multicomp Pro Tri
Rated Cable & Wire

29
Semiconductors

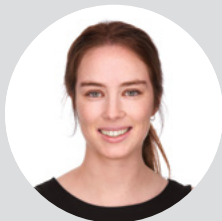
A MESSAGE FROM THE EDITORS

We're back with our latest version of Connect magazine. We are grateful to our customers who choose us as their partner and look forward to a long and successful relationship.

Please do take a moment to access Connect's online catalogue featuring more than 14,000 products with great savings of up to 50%. Our local sales and technical support team is always there to simplify product selection and ordering processes for you.

Visit our website nz.element14.com/connect-magazine#register-with-us or subscribe to our marketing emails to receive updates online.

If you have any feedback on our products and services, please e-mail us at nz-marketing@element14.com



Brianna Benstead | Tess Turner
Marketing Executives
Australia & New Zealand

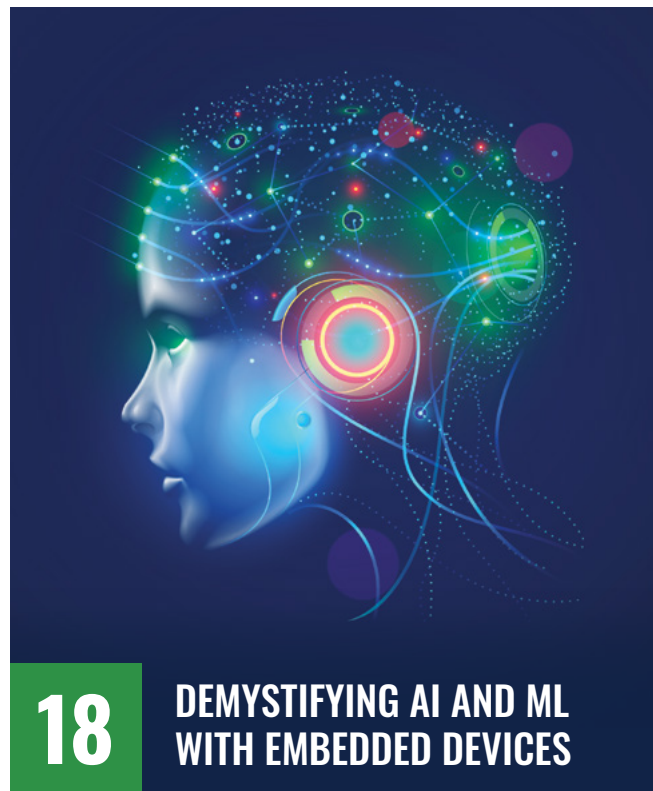


Scan the QR Code to
explore Connect online

/ CONTENTS

Product Categories

- 04** New Products
- 06** Test & Measure
- 09** **Feature:** Pico Technology
- 10** Tools & Production Supplies
- 13** Passives
- 14** Electromechanical



- 22** Interconnect
- 26** **Feature:** Multicomp Pro Tri Rated Cable & Wire
- 29** Semiconductors
- 30** SBC & Development Kits
- 32** Multicomp Pro



WELCOME TO THE 38TH EDITION OF CONNECT MAGAZINE!

At element14 we strive to deliver resolutions to our customers' everyday pain-points but also go beyond so that we can add value at every stage of the product life-cycle.

Our line card includes products, services and solutions that support the design journey, from prototype and test right through to production and maintenance. Our product teams actively identify and source innovative, niche products for today's most in-demand application areas. And, our technical team is always there to support you with component selection and a wealth of essential learning resources.

In this edition of Connect, we take a look at 'Demystifying AI and ML with embedded devices'. The article details how through the deployment of innovative techniques, algorithms and robust workflows, machine learning can now be carried out directly on embedded devices.

Visit nz.element14.com/connect-magazine to go through our latest issue for unbeatable offers, insights and latest product offerings, including a couple of my favourites from Bak, Multicomp Pro, Pico Technology and BeagleBoard.

Luke Grigg

Regional Sales Director
Australia & New Zealand

LUKE'S PICKS

PICOSCOPE 2204A - PC USB OSCILLOSCOPE



- 2 channels
- 8 bit resolution
- USB connected and powered



Order Code
236542502

\$233.80

102110423 - BEAGLEBONE BLACK INDUSTRIAL



- BeagleBone Black industrial based on Sitara AM3358 Processor
- Sitara AM3358BZCZ100 1GHz, 2000 MIPS ARM Cortex-A8 32-Bit RISC microprocessor
- Programmable real-time unit subsystem



Order Code
352008302

5% \$117.42

HT-225D - CRIMP TOOL

multicomp PRO

- Ratchet crimping tool for D-sub and open barrel connectors
- Carbon steel frame and black oxide finish
- 210mm length



Order Code
162483202

30% \$30.77

LP-454965-2P-3M - RECHARGEABLE BATTERY



- Rechargeable lithium ion battery with connector terminals
- Nominal voltage of 3.7V
- Charge voltage of 4.2V



Order Code
240185502

20% \$24.63



E14Community



element14electronics



element14

Find us on the web at:
nz.element14.com

Latest issue:
nz.element14.com/connect-magazine

The Publication is produced by element14, a trading name of element14 Pty Ltd, GST Reg No. 55-796 327, PO Box 74342, Greenlane, Auckland, 1546, New Zealand.

All products shown in Connect are subject to availability

NEW PRODUCTS

Explore our recently added products from leading manufacturers for all your technological and design needs.

To view more products, scan the QR code or visit us online at:
nz.element14.com/connect38_newproducts



PICOSCOPE 9402-05 - PC USB OSCILLOSCOPE



New



- 70ps transition time and 1TS/s (1ps resolution) random equivalent-time sampling
- Pulse, eye and mask testing down to 45ps and up to 11Gb/s
- 12bit 500MS/s ADCs

\$17,656.61

Order Code
381765802

KHA12 - ENVIRONMENTAL TEST PROBE



New



- K type plug mounted flat food temperature probe 110mm x 5mm
- Waterproof probe can be used to measure temperatures b/w boxes, also for monitoring liquid products
- Thermocouple type K

18% OFF

\$40.23

Order Code
386447202

90626 - DISPOSABLE GLOVES



New



- Size: Small
- Glove material: Nitrile
- Pack of 100

30% OFF

\$82.04

Order Code
387285802

W3006 - ANTENNA



New



- Antenna case: 10mm x 3.2mm x 1.5mm
- Centre frequency 1: 2.45GHz
- Centre frequency 2: 5.5GHz

40% OFF

\$1.57

Order Code
386108402

MSOX2024A PROMO - MSO / MDO OSCILLOSCOPE



New



- Scope Channels: 4+8 Channel
- Bandwidth: 200MHz
- Sampling Rate: 2GSps

1% OFF

\$5,724.23

Order Code
382616602

T3448M 8 - TAPE MEASURE XT



New



- 8m measure tape
- Rubber casing for a strong grip and impact resistance
- Manual tape lock

20% OFF

\$43.80

Order Code
386918702

SF501AF-BLK - GLASSES



New



- Anti-Fog / Anti-Scratch
- Rimless ocular frame
- Offers protection against UV radiation up to 400nm

5% OFF

\$25.25

Order Code
381853702

TFDRMU - DIN RAIL DIGITAL TIMER



New



- Digital multifunction timer
- 24 programmable timing modes
- 0-9999sec or 0-9999min time ranges

10% OFF

\$141.72

Order Code
382943502

T6-1000PRO/APAC - DIGITAL MULTIMETER



New



- Functions: AC Current, AC/DC Voltage, Continuity, Diode, Frequency, Resistance, Temperature
- Response type: True RMS
- Resistance measure: 100kohm

3% OFF

\$512.13

Order Code
382855002

391A.16VE - CUTTER



New



- Diagonal cutter
- Cutting capacity: 3mm
- Overall length: 165mm

20% OFF

\$67.85

Order Code
387359402

K4551220D - SECURITY CABLE



New



- Double looped
- 12mm x 2000mm
- Hardened braided steel

30% OFF

\$20.80

Order Code
386919402

MP008553 - ROCKER SWITCH



New



- Contact Configuration: SPST-NO
- Non Illuminated
- Panel mounting

40% OFF

\$2.27

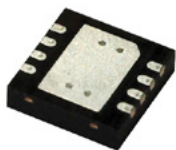
Order Code
383394102

BK16-HTJ-601I - CARTRIDGE FUSE HOLDER**New**

- Fuse size held: 1/4" x 1-1/4"
- Fuse current: 10A
- Holder terminals: Solder

30% OFF**\$4.77**Order Code
382094602**ABLS7M2-16.000MHZ-D2Y-T - CRYSTAL****New**

- Crystal case: SMD, 7mm x 4.1mm
- Load Capacitance: 18pF
- Operating temperature: -40°C to 85°C

30% OFF**\$0.346**Order Code
381968802**MAX38912ATA+ - LDO VOLTAGE REGULATOR****New**

- Output type: Adjustable
- Voltage: 1.7V to 5.5V
- Operating temperature: -40°C to 125°C

20% OFF**\$1.99**Order Code
387012902**M58-2800642R - MEZZANINE CONNECTOR****New**

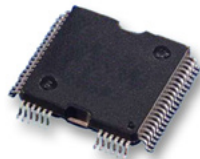
- Pitch spacing: 0.8mm
- 2 rows, 60 contacts
- Surface mounting

10% OFF**\$2.89**Order Code
384737402**CY8CKIT-062S4 - EMBEDDED DEVELOPMENT KIT****New**

- 512Mbits quad SPI nonvolatile flash provides high-performance, safe NOR flash memory solution
- Rich analogue including dual SAR ADCs, DAC, Opamps and comparators
- Capable of operating in system deep sleep mode

\$100.07Order Code
385868202**BK2-S-4202-1X-R - CARTRIDGE FUSE HOLDER****New**

- Fuse current: 25A
- Fuse size held: 1/4" x 1-1/4"
- Holder terminals: Quick connect

30% OFF**\$2.21**Order Code
382094202**FS32K144WATOWLHT - ARM MCU****New**

- Architecture: ARM Cortex-M4F
- Number of bits: 32bit
- CPU speed: 80MHz

30% OFF**\$16.72**Order Code
387483402**SGM1290 - CONNECTOR ADAPTER****New**

- M12 X industrial Ethernet to full Category 6A RJ45 cabling
- M12 X coded IP68 rated (when mated, waterproof cap also available separately)
- Compliant with IEC standards for connectors

20% OFF**\$57.44**Order Code
383163802**MAX22199EVKIT# - EVALUATION KIT****New**

- EV kit logic side is USB-powered
- Galvanic isolation using MAX14483
- Robust design ±2KV surge tolerant line-to-ground & line-to-line, ±8KV contact ESD, ±15KV AirGap ESD

3% OFF**\$188.35**Order Code
387013202**EVL28167-A-Q-00A - EVALUATION BOARD****New**

- Configurable output voltage via the FB pin
- 0.08V to 1.637V reference voltage (VREF) range with 0.8mV resolution via I2C (default VREF is 1V)
- 3A output current or 4A input current, four internal and low RDS (ON) power MOSFETs

\$41.92Order Code
388588702**ASFM0162S - SAFETY RELAY****New**

- Coil voltage: 16VDC
- Contact configuration: SPST-NO, SPST-NC
- Relay mounting: Through hole

10% OFF**\$45.46**Order Code
381699102**DSPIC33CK512MP606-I/PT - DIGITAL SIGNAL CONTROLLER****New**

- Core frequency: 100MHz
- Flash memory size: 512KB
- I/O's: 53 I/O's

20% OFF**\$9.43**Order Code
386141602**2359482-1 - LED STREET LIGHT CONNECTOR****New**

- Voltage rating: 600V
- Current rating: 15A
- Termination type: Through hole

30% OFF**\$8.63**Order Code
387369702**UJA1164A-EVB - EVALUATION BOARD****New**

- Evaluate NXP's UJA1164A high-speed CAN system basis chip w/standby mode, watchdog into CAN network
- Facilitate testing, evaluation of UJA1164A prd features in variety of MCU IO interface environment
- Supporting Arduino connection with microcontroller board

10% OFF**\$162.22**Order Code
386894002**TMC2208SILENTSTEPSTICK - EVALUATION BOARD****New**

- TMC2208 motor controller/driver, stepper power management evaluation board
- For use with: 2-Phase Motors

3% OFF**\$13.82**Order Code
386129802

TEST & MEASURE

Explore our range of test and measurement equipment for your analysing requirements.

To view more products, scan the QR code or visit us online at: nz.element14.com/connect38_TestandMeasure



GPP-3060 RS232/USB/LAN - BENCH POWER SUPPLY

GW INSTEK

New



- 4.3" TFT LCD display
- Setting resolution: 1mV/0.1mA, read back resolution: 0.1mV/0.1mA
- Load function (CC, CV, CR mode)

5% OFF

\$1,744.52

Order Code
387481202

72-2540 - BENCH POWER SUPPLY

TENMA



- Complete digital control / programmable 10mV / 1mA resolution
- OCP and OVP settings, constant protection mode
- CV / CC constant voltage and constant current modes

20% OFF

\$158.08

Order Code
244541202

PICOSCOPE 5444D MSO - PC USB OSCILLOSCOPE

pico Technology



- FlexRes 8 to 16bit hardware resolution
- Front panel save and recall buttons
- Up to 512MS capture memory

3% OFF

\$4,979.33

Order Code
289319802

PICOSCOPE 2205A-D2 - PC USB OSCILLOSCOPE

pico Technology



- 2 channels
- 8 bit resolution
- Arbitrary waveform generator

3% OFF

\$325.39

Order Code
246022502

U8002A - BENCH POWER SUPPLY

KEYSIGHT TECHNOLOGIES



- Excellent regulation (0.01% + 2mV; 0.02% + 2mA)
- Fast 50µsec transient response
- Low output noise of 1mVrms and 3mArms from 20Hz to 20MHz

\$897.73

Order Code
163731202

RTM3004 + RTM-B242 + RTM-B1 (RTM3K-24M) - MSO / MDO OSCILLOSCOPE

ROHDE & SCHWARTZ



- 10 second boot time
- Maximum sampling rate of 2.5G sample/s per channel, 5G sample/s interleaved
- Waveform update rate is 64,000 waveforms/s

\$10,195.99

Order Code
283659702

TBS2074B - DIGITAL OSCILLOSCOPE

Tektronix



- TBS2000B series digital storage oscilloscope with 4 analogue channels and 70MHz bandwidth
- TekVPI probe interface supports active, differential and current probes with automatic scaling
- New front-end design enables more accurate measurements

\$3,589.26

Order Code
336486402

TA041 - OSCILLOSCOPE PROBE

pico Technology



- Bandwidth: DC to 25 MHz (-3 dB)
- Attenuation ranges: 10:1 / 100:1
- DC accuracy: ±2%

\$648.53

Order Code
166734302

72-13300 - BENCH POWER SUPPLY

TENMA



- Compact design, safe, simple and convenient operation
- 3 channel output (Ch1 and Ch2 (2x, 0 - 30V) and Ch3 (1x, adjustable 2.5V/3.3V/5V))
- 10mV/1mA high accuracy resolution DC power supply

20% OFF

\$217.40

Order Code
284840802

MDO32 3-BW-200 - MSO / MDO OSCILLOSCOPE

Tektronix



- 2 and 4 analog channel models
- Large 11.6" (1920 x 1080 HD resolution) capacitive touch display, highly intuitive user interface
- 100 MHz, 200 MHz, 350 MHz, 500 MHz, 1 GHz bandwidth models

2% OFF

\$8,040.66

Order Code
310406402

MP720013 EU-UK - MIXED SIGNAL OSCILLOSCOPE

multicomp PRO



- Large 8" LCD colour display (640x480)
- Supports multiple trigger modes including bus, status, data alignment, data width and distributed queue
- 100MHz logic analyzer - 20S/s-2GS/s sample rate (real time), 16 channels and record length of 4M points

10% OFF

\$1,195.71

Order Code
310757202

P2056 DUAL PACK - OSCILLOSCOPE PROBE

pico Technology



- Voltage coefficient 0.00025%/V
- Probe risetime 700ps
- Low input capacitance of 9.5pF

\$648.53

Order Code
336100002

TPP0101 - OSCILLOSCOPE
PROBE**Tektronix**

- 10X Attenuation
- 100 MHz Bandwidth
- 1.3 m Length

2% OFF

\$102.74Order Code
184096902

6514/E - ELECTROMETER

KEITHLEY
A Tektronix Company

- <1fA noise
- >200Tohm input impedance on voltage measurements
- Charge measurements from 10fC to 20µC

2% OFF

\$12,641.71Order Code
20747640272-14500 - HANDHELD
DIGITAL MULTIMETER**TENMA**

- Pocket size digital multimeter with 4,000 counts and LCD backlight display
- Manual function select and auto ranging
- NCV detection

20% OFF

\$29.68Order Code
291160602

MP700434 - LCR METER

multicomp PRO

- Test frequency of 100hz, 120hz, 400hz, 1Khz, 4Khz, 10Khz, 40Khz, 50Khz, 75Khz and 100Khz
- Test level of 0.6Vrms & 0.3Vrms
- 2.8" TFT LCD screen

20% OFF

\$247.30Order Code
340682502

TESTO 720 - THERMOMETER

Be sure. **testo**

- Measuring range from -100 to +800°C, ±0.2% of mV(+200 to +800°C) accuracy, 0.1°C resolution(Pt100)
- Measuring range from -50°C to 150°C, 0.1°C resolution (NTC)
- Dimension is 182mm x 64mm x 40mm

5% OFF

\$304.95Order Code
267808702AS108 - RF SIGNAL
GENERATOR**pico**
Technology

- FM, PM and AM modulation, internal sine or external input
- External reference clock I/O and trigger I/O
- Use sweep lists to emulate schemes such as QPSK, QAM, ASK, FSK

\$9,219.66Order Code
296565702BK5493C - BENCH DIGITAL
MULTIMETER**BK PRECISION**

- 0.0035% (35ppm) DC voltage basic accuracy, rear input terminals for rack use
- High-contrast 4.3inch full colour LCD
- Bar meter, trend chart, histogram display modes (can be combined with statistics or math functions)

10% OFF

\$1,961.87Order Code
356511802FLUKE-377 FC - CLAMP
METER**FLUKE**

New



- Non-contact voltage true-rms AC/DC clamp meter with iFlex
- Measure voltage and current with clamp jaw
- Complete 3-phase voltage and current tests in 3 quick steps

3% OFF

\$1,327.11Order Code
382852502FLK-TIS75+ 27HZ - THERMAL
IMAGER**FLUKE**

New



- 384 x 288 (110,592 pixels) infrared resolution and 42° x 30° field of view
- Take photos of asset numbers and other identifiers, sort thermal images by asset (asset tagging)
- Support remote control operations and dew point calculation

3% OFF

\$8,323.59Order Code
382852402TP101 - DIGITAL STICK PROBE
THERMOMETER**TENMA**

- Temperature range: -50°C to 300°C
- 6" metal probe
- Vertical display (parallel and inline to probe)

20% OFF

\$6.29Order Code
280185402BK1823A - FREQUENCY
COUNTER**BK PRECISION**

- Frequency counter is microprocessor controlled
- Frequency ratio measurement function, time interval measurement, trigger level function
- External frequency standard input

10% OFF

\$914.66Order Code
284345202EX355 - HANDHELD DIGITAL
MULTIMETER**EXTECH**
INSTRUMENTS

- Basic DCV accuracy is ±0.5%
- Measures DC/AC voltage range from 0.01mV to 600V
- Measures DC/AC current range from 0.1µA to 10A

10% OFF

\$163.30Order Code
268864502

FLUKE 365 - CLAMP METER

FLUKE

- 200 A AC and DC current measurement with detachable jaw
- 600 V AC and DC voltage measurement
- State of the art signal processing allows for use in noisy electrical environments while providing stable readings

3% OFF

\$726.31Order Code
182718102FLUKE 566 - IR / INFRARED
THERMOMETER**FLUKE**

- Measure -40°C to 650°C
- Easily access advanced features with the soft-key buttons and graphical display
- Measure smaller objects from further away, with a distance-to-spot ratio of 30:1 (566)

3% OFF

\$879.42Order Code
150375102

445703 - HUMIDITY METER

EXTECH
INSTRUMENTS

- Maximum/minimum with reset function
- Memory with reset function stores maximum and minimum measurements
- °C/°F switchable temperature measurements

30% OFF

\$90.30Order Code
268863702

TL809 - TEST LEAD KIT

EXTECH
INSTRUMENTS

- Two 42" (1m) PVC lead extensions with shrouded banana plugs at both ends
- Two modular 4" heavy duty test probe handles with 4mm banana plug tip, CAT III-1000V, UL listed
- Two plunger mini-hooks, two alligator clips with removable insulators

10% OFF**\$28.98**Order Code
268866802

12-1655-0000 - TEST LEAD SET

GC
ELECTRONICS

- 21AWG heavy-duty jumper wire test lead set with crocodile clip
- 22" Leads

20% OFF**\$9.95**Order Code
210209402

66.9755-21 - CROCODILE CLIP

STÄUBLI
MC

- All-round insulation for testing up to 1000V and 32A
- Toothed jaws offer wide grip even down to fine wire with the socket accepting a spring loaded 4mm plug and featuring rigid insulated sleeving

44% OFF**\$9.13**Order Code
235331902

550-0100 - BANANA PLUG

DELTRON Components

- Stainless steel contact spring
- 50V Nominal working voltage
- 10mΩ contact resistance

40% OFF**\$1.36**Order Code
142589302

E3600A-100 - TEST LEAD SET

KEYSIGHT
TECHNOLOGIES

- Maximum continuous current of 5A
- Maximum operating voltage of 30VAC / 60VDC
- 4x banana to hook clips

\$25.70Order Code
163731302

SE001 - TEST ACCESSORY

pico
Technology

- Tip diameter is 1.5mm
- Tip temperature range from -60°C to 350°C
- Cable length is 1m

\$18.30Order Code
284209402

972354100 - BANANA TEST CONNECTOR

HIRSCHMANN
Test & Measurement

- 4 mm safety system
- Sockets
- AC/DC 1000 V rated voltage (I)

45% OFF**\$5.94**Order Code
101140102

BU-24APN - TEST CLIP

MUELLER

- Length: 72mm
- Jaw Opening: 19mm
- Connector Type: Grounding clip

30% OFF**\$2.78**Order Code
283406402

934092101 - TEST LEAD

HIRSCHMANN
Test & Measurement

- 4mm stackable banana plug to 4mm stackable banana plug
- Lead length: 1m
- Current rating: 16A

45% OFF**\$10.49**Order Code
828199802

CT2392A-0 - ALLIGATOR CLIP

Cal Test
ELECTRONICS

- Jaw opening: 24mm
- Current rating: 20A
- Alligator clip to banana jack

10% OFF**\$11.36**Order Code
292995402

72-14334 - TEST PROBE CONNECTOR

TENMA

- Voltage Rating : 30V AC / 60V DC, 6A (at +40°C)
- Gold nickel plated copper alloy contact material
- Polyamide insulator material

30% OFF**\$3.42**Order Code
293033702

4299-8 - RACK MOUNT KIT

KEITHLEY
A Tektronix Company

- For use with Keithley 2450, 2460 & 2461 Source Meter, DMM7510

2% OFF**\$253.13**Order Code
281183902

27.187.1 - CROCODILE CLIP



- Current rating is 10A
- Jaw opening maximum is 7mm
- Voltage rating is 30VAC

40% OFF**\$0.954**Order Code
169901602**multicomp**



Oscilloscopes, data loggers and RF equipment for debug and test of complex designs



**6 GHz and 8.5 GHz
Vector Network Analysers**

**Real Time Oscilloscopes
from 10 MHz to 1 GHz bandwidth**

**Data logging software
now with PicoLog Cloud**

www.picotech.com/A1067

nz.element14.com/connect38-pico

TOOLS & PRODUCTION SUPPLIES

Check out our assortment of tools and production supplies to help you with your project or maintenance requirements.

To view more products, scan the QR code or visit us online at: nz.element14.com/connect38_ToolsandProduction



CREATOR 3 - 3D PRINTER



- Creator 3 is a professional independent dual extruder 3D printer
- Maximum build volume 300mm x 250mm x 200mm
- Flexible and removable heated build plate

10% OFF

\$4,933.14

Order Code
322068702

7874B - DESOLDERING PUMP



- ESD safe
- Single handed operation
- Lockable spring loaded plunger

5% OFF

\$23.51

Order Code
41902302

24-6337-8817 - SOLDER WIRE



- Solder Alloy: 63, 37 Sn, Pb
- External diameter: 1.575mm
- Melting temperature: 183°C

30% OFF

\$72.66

Order Code
116230802

49-923-150 - DIGITAL CALIPER



- 150mm digital caliper
- ±0.03mm accuracy
- Three button operation - On/Off, inch/metric conversion and zero in any position

20% OFF

\$64.14

Order Code
137586302

ENDER-3 PRO - 3D PRINTER



- Creality DIY Ender-3 PRO 3D printer of 220x220x250mm printing size with MK8 mechanism
- More stable 40x40 aluminium extrusion for the Y-axis base
- Resume printing while power off

5% OFF

\$346.67

Order Code
294548902

STTC-136 - SOLDERING IRON TIP



- 2.5 mm Tip / Nozzle width
- 9.9 mm Tip / Nozzle length
- Style: Chisel, Cone 30°

10% OFF

\$52.46

Order Code
495064102

GMC307 - SOLDER PELLETS



- 99/0.3/0.7 grade tub lead-free solder pellet, made of Sn/Ag/Cu alloy
- Melting temperature: 228°C
- 250g tub

20% OFF

\$75.39

Order Code
125906502

EMB 1200-1 - WEIGHING SCALE



- EMB series precision balance for entry level laboratory balance
- Maximum weighing capacity is 1,200g
- Large backlit LCD display

20% OFF

\$140.66

Order Code
288638102

2503180001 - 3D PRINTER FILAMENT



- PLACTIVE AN1 PLA filament is a nanocomposite developed with high quality PLA & Nano-Copper additive
- Non-toxic product and environmentally friendly (biodegradable)
- Clinically tested in prosthesis for amputees with excellent results

5% OFF

\$131.96

Order Code
325131602

PS-4 - SOLDERING IRON TIP



- Tip / Nozzle width: 3.2mm
- Tip / Nozzle style: Screwdriver

30% OFF

\$13.87

Order Code
129679902

SMD4300AX10 - SOLDER PASTE



- Supplied in 10cc syringe
- Solder alloy: 63, 37 Sn, Pb
- Weight: 35g

30% OFF

\$38.96

Order Code
185022402

T3482 - SPIRIT LEVEL



- Total length: 210mm
- Tough ABS plastic body for damage protection
- Patented detachable mini level with magnetic base

30% OFF

\$22.93

Order Code
328006802

33251 - MEASURING TAPE



New



- 5m measuring tape
- With belt clip
- Precise measurements in no time

30% OFF

\$16.19

Order Code
384737102

T4456 - UNIVERSAL KEY



- Multi-purpose tool for locking systems of electric, gas and water enclosures and other technical installations in buildings
- Double-Joint design for improved ergonomics and high torque application
- Compact profile for additional comfort and ease of storage

20% OFF

\$35.92

Order Code
351718002

01476 - NUT DRIVER



- Drive Size: 6.35mm
- Blade length: 300mm
- Overall length: 400mm

30% OFF

\$40.21

Order Code
328803502

28874 - DRILL BIT SET



- 8000RPM approximately for soft materials
- 3000RPM approximately for soft materials
- Kit contents: 0.3, 0.5, 0.8, 1, 1.2, 1.5, 2, 2.5, 3.2mm drill bits

30% OFF

\$8.06

Order Code
107563102

185A.20VE - PLIERS



New



- Long half round nose
- Overall length: 200mm

20% OFF

\$93.74

Order Code
387359902

WERA 2GO E 1 - TOOL SET



- 73-piece tool set in compact Wera 2go 2 tool container for electricians in mobile operations
- 370 x 345 x 140mm size

20% OFF

\$2,014.09

Order Code
380428402

D02368.. - UTILITY KEY



- Opens water, electricity and gas cabins
- Can also be used for radiators, stop cocks and taps

40% OFF

\$2.08

Order Code
282200502

98 12 02 - SCREWDRIVER



- Robertson, Size R2
- Overall length: 210mm

30% OFF

\$19.86

Order Code
377956102

187A.18VE - COMBINATION PLIERS



New



- 1.8mm Jaw opening
- 185mm length

20% OFF

\$86.00

Order Code
387360102

90 22 10 BK - PIPE CUTTER



- Pipe cutter type: Plastic tube
- Overall length: 72mm
- Maximum pipe diameter: 50mm

30% OFF

\$48.83

Order Code
377955002

T5970 - CORE TOOL KIT



New



- Kit contents: Magma tool roll, knife, tape, pliers, cutters, bit clip set, screwdriver bit adapter & hacksaw

20% OFF

\$156.69

Order Code
386919102

KRAFTFORM KOMPAKT STUBBY MAGAZIN RA 2 - BIT HOLDER



- Short, compact stubby shape for working in tight installation spaces, with 6 bits in the integrated magazine
- Ergonomic 2-component kraftform handle for precise work

20% OFF

\$59.27

Order Code
380428202

D03106 - ADJUSTABLE WRENCH SET



- 6" and 8" adjustable wrench set
- Corrosion resistant
- Smooth jaws

10% OFF

\$8.81

Order Code
338304702

26853 - PLIERS



- 3 pcs of combination pliers, water pump pliers, heavy-duty diagonal cutters

20% OFF

\$111.76

Order Code
377566702

D03004 - WIRE STRIPPER & CUTTER



- Pressed steel stripper for cables up to 3mm diameter
- Hardened and tempered sprung steel blades
- Adjustable screw controller

30% OFF

\$3.41

Order Code
254300702

T20075 - WIRE STRIPPER



New



- Automatic wire stripper for AS-Interface cables with PUR, TPE or FR-PVC insulation
- Unlimited stripping length, with optical length scale 15-18-20 mm

20% OFF

\$154.32

Order Code
386919702

206-1204 - CRIMP TOOL



- For use with 0.25mm² to 4mm² Insulated and Uninsulated Contacts
- Uniform, compact crimping on all four sides for high conductor retention
- Built-in ratchet mechanism ensures gas-tight crimp connection

20% OFF

\$431.14

Order Code
336115802

11-03-0006 - EXTRACTION TOOL



- For use with 2.36mm pin and socket terminals

10% OFF

\$32.38

Order Code
14360202

10037 - ANTISTATIC BAG



- A must have product for users dealing with electronic components and assemblies
- Open top metal-in transparent static shielding bag
- Provides excellent static safe environment for sensitive electronic components and PCB assemblies

20% OFF

\$16.36

Order Code
290754502

004-0015F - ANTISTATIC BAG



- Blow-moulded with anti-static additives from LDPE and LLDPE
- The sealed air bubble offers superior cushioning and shock proof function
- 228.6mm x 284.99mm

40% OFF

\$8.46

Order Code
168781702

SUPERLUBE OIL, 7ML - LUBRICANT



- 7ml multi purpose synthetic lubricant with PTFE
- Reduces friction and wear
- Withstands temperatures of -23°C to 176°C continuous

20% OFF

\$14.53

Order Code
53714702

0595-2GM-UL - SUPER GLUE



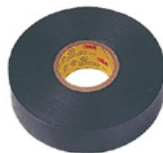
- Supplied in a 2g tube on a carded pack
- Adhesive type: Cyanoacrylate
- Adhesive colour: Transparent

30% OFF

\$0.987

Order Code
349857502

33+ 19MM - ELECTRICAL INSULATION TAPE



- Premium grade, super 33+ 7mil thick, all-weather vinyl insulating tape
- Designed to perform continuously in ambient temperatures up to 105°C
- Tape is conformable for cold weather application down to -18°C

30% OFF

\$13.97

Order Code
14307802

107425 - VELCRO HOOK AND LOOP



- Length is 5m
- Width is 20mm

30% OFF

\$6.54

Order Code
10742502

BOXER WH PTS - TOOL CASE



- Chromed handle and central lock with key (mod euro boxer excluded)
- Bottom area with removable dividers, metal lid support stay
- 190mm x 430mm x 320mm

20% OFF

\$314.54

Order Code
278378202

V11-1 - STORAGE BOX



- SMD packing set with 130 boxes and foam grid
- Non conductive plastic box material
- 30mm x 227mm x 170mm

30% OFF

\$45.73

Order Code
958448002

D03102 - PLASTIC GARAGE FUNNEL



- Tapered spout
- Resistant to oil and fuel
- 200mm diameter mouth

30% OFF

\$1.78

Order Code
338304302

SF102AF-BLU - GLASSES

New



- Anti-fog / Anti-scratch
- Rimless ocular frame
- Offers protection against glare



10% OFF

\$20.30

Order Code
381853802

PASSIVES

Shop our range of passive components including capacitors, filters, inductors, resistors and more.

To view more products, scan the QR code or visit us online at: nz.element14.com/connect38_passives



DK1E3EA102M86RAH01 - CERAMIC SUPPRESSION CAPACITOR

muRata
INNOVATION IN ELECTRONICS



- Capacitance: 1,000pF
- Tolerance: $\pm 20\%$
- Temperature range: -25°C to 85°C

45% OFF

\$1.31

Order Code
285883402

25YXF47MEFC5X11 - ELECTROLYTIC CAPACITOR

Rubycon



- Capacitance value ranges from 47 μF
- $\pm 20\%$ tolerance
- Rated voltage of 25V

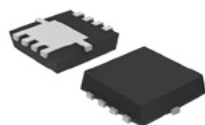
45% OFF

\$0.195

Order Code
114461902

EMI2121MTTAG - COMMON MODE FILTER

onsemi



- Large differential mode bandwidth with cut-off frequency $> 2\text{GHz}$
- High common mode stop band attenuation is $> 25\text{dB}$ at 700MHz, $> 30\text{dB}$ at 800MHz (typ)
- Provides ESD protection to IEC61000-4-2 level 4, $\pm 12\text{KV}$ contact discharge

40% OFF

\$1.16

Order Code
262796202

PT10LH01-223A2020-S - TRIMPOT

PIHER sensing systems
an Amphenol company



- Trimpot type: Single turn
- Material: Carbon
- Adjustment type: Side adjust

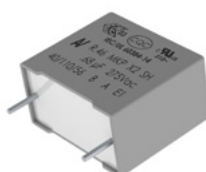
40% OFF

\$0.47

Order Code
312844502

R413114700000M - SAFETY CAPACITOR

KEMET
a YAGEO company



- Rated voltage: 300 VAC 50/60 Hz
- Lead spacing: 10 - 37.5 mm
- Capacitance tolerance: $\pm 20\%$

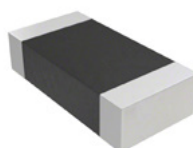
45% OFF

\$0.404

Order Code
276313702

AC0603KRX7R9BB103 - SMD MULTILAYER CERAMIC CAPACITOR

YAGEO
Innovation Service Around the Globe



- High component and equipment reliability
- AC series soldering is compliant with J-STD-020D
- Reduces environmentally hazardous waste

30% OFF

\$0.017

Order Code
336629202

P231-FC20BR10K - ROTARY POTENTIOMETER

Ty Electronics



- 100,000-cycle rotational life
- Operating temperature range of -20°C to 70°C
- Track resistance: 10kohm

30% OFF

\$1.72

Order Code
141816102

KTR18E2PF4704 - SMD CHIP RESISTOR

ROHM



- Resistance: 4.7Mohm
- Resistance tolerance: $\pm 1\%$
- Power rating: 250mW

60% OFF

\$0.136

Order Code
280248702

MC0805B104K500A5.08MM - MULTILAYER CERAMIC CAPACITOR

multicomp



- General purpose radial leaded multilayer ceramic capacitors (MLCC)
- Capacitance: 0.1 μF
- Voltage(DC): 50V

50% OFF

\$0.296

Order Code
239577302

CL05B104KO5NMMC - SMD MULTILAYER CERAMIC CAPACITOR

SAMSUNG ELECTRO-MECHANICS



- Capacitance: 0.1 μF
- Voltage(DC): 16V
- Dielectric characteristic: X7R

70% OFF

\$0.014

Order Code
301334902

PWR263S-35-56R0F - SMD CHIP RESISTOR

BOURNS



- High power resistor
- Resistance: 56ohm
- Resistance tolerance: $\pm 1\%$

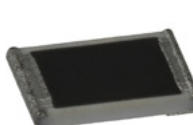
20% OFF

\$6.39

Order Code
210170402

CRCW120666K5FKEA - SMD CHIP RESISTOR

VISHAY
The DNA of test.



- Operating temperature range of -55°C to 155°C
- Maximum power rating of 1W
- Stability $\Delta R/R$ of 1% for 1000h at 70°C

50% OFF

\$0.078

Order Code
213957402

ELECTROMECHANICAL

Take a look at our vast range of electromechanical components from leading manufacturers.

To view more products, scan the QR code or visit us online at: nz.element14.com/connect38_electromechanical



103450AR2-1S-3M - RECHARGEABLE BATTERY



- Rechargeable lithium ion battery with connector terminals
- Nominal voltage is 3.7V
- Battery capacity is 1800mAh (0.2C discharged from 4.2V to 2.75V)



20% OFF

\$21.14

Order Code
240185702

CR-3032/BN - BATTERY

Panasonic

- IEC code: CR3032
- Nominal capacity of 500mAh
- Nominal battery voltage of 3V



50% OFF

\$4.44

Order Code
189267502

LPS44 - AC/DC OPEN FRAME POWER SUPPLY (PSU)

ARTESYN
Embedded Power Ltd Advanced Energy Company

- Universal input
- Remote sense
- Built-in EMI filter



30% OFF

\$56.45

Order Code
117148902

HDR-60-24 - AC/DC DIN RAIL POWER SUPPLY (PSU)



- Short circuit, overload and over voltage protection
- Ultra-slim 52.3mm design
- LED Indicator for power on



10% OFF

\$44.52

Order Code
281564302

18650CA-1S-3J - RECHARGEABLE BATTERY



- Rechargeable lithium ion battery with connector terminals
- Nominal voltage of 3.7V
- Charge voltage of 4.2V



20% OFF

\$13.50

Order Code
240185202

1001-0080-UK - POWERLINE 4 ULTRA NIMH / LI-ION BATTERY CHARGER



- Four charging slots suitable for AA, AAA, C & D NiMH and 10400-32650 Li-ion cells
- Comprehensive LCD display for battery status information
- 5V, 2A USB charging socket for mobile devices



10% OFF

\$105.92

Order Code
326789802

RPS-65-15 - AC/DC OPEN FRAME POWER SUPPLY (PSU)



- Power rating (convection cooling): 65.1W
- Input voltage VAC: 80V AC to 264V AC
- Power supply output type: Adjustable, fixed



10% OFF

\$33.44

Order Code
281560302

SD-15B-5 - ISOLATED CHASSIS MOUNT DC/DC CONVERTER



- Input ratio: 2:1
- Output power max: 15W
- Isolation voltage: 1.5kV



10% OFF

\$28.18

Order Code
281615802

MN1300 P4 +/-PWR - BATTERY **DURACELL**

New



- Voltage: 1.5V
- Size: D
- Pack of 4

20% OFF

\$13.10

Order Code
381913002

TXH 240-124 - AC/DC OPEN FRAME POWER SUPPLY (PSU) **TRACO POWER**



- Short-circuit and overvoltage protection
- Universal input 90 to 264VAC
- Adjustable output voltage

10% OFF

\$172.10

Order Code
177218402

TCL 060-124 - AC/DC DIN RAIL POWER SUPPLY (PSU) **TRACO POWER**



- Output power range from 24W to 240W
- Maximum output current is 10A
- Switching frequency range from 55KHz to 180KHz depending on load

20% OFF

\$122.41

Order Code
124257502

SW3783B - AC/DC POWER SUPPLY **Power.Pac UK**



- 3 pin IEC connector
- Polarity +ve centre
- Automatic built in short circuit, over voltage and over current protection

40% OFF

\$28.14

Order Code
280268802

**25HK-AY-050A300-CP - AC/
DC POWER SUPPLY**

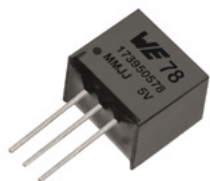
- High reliability
- 4x Interchangeable AC plugs (Australia, Europe, UK and US)
- Supplied with 8x output connectors

10% OFF**\$25.37**Order Code
272567802**LS75-15 - AC/DC ENCLOSED
POWER SUPPLY (PSU)**

- 15V/75W 1-output enclosed power supply
- 120mVp-p maximum ripple and noise
- Operating temperature range: -25°C to 70°C

5% OFF**\$41.82**Order Code
165744502**OKI-78SR-5/1.5-W36-C -
DC/DC CONVERTER**

- High efficiency with no external components
- Short circuit protection
- Outstanding thermal derating performance

10% OFF**\$6.84**Order Code
210210102**173010578 - FIXED STEP
DOWN REGULATOR MODULE**

- Peak efficiency up to 93%
- Current capability up to 1A
- Input voltage range from 7V to 28V and output voltage is 5V

20% OFF**\$9.66**Order Code
257747902**2-5700-IG1-P10-DD-000040
10A - THERMAL CIRCUIT
BREAKER**

- Ambient temperature range: -20°C to 60°C
- IP40 (operating area), IP00 (terminal area)
- Protection rating
- Panel mount

30% OFF**\$29.08**Order Code
856743302**TMLM 04115 - AC/DC PCB
MOUNT POWER SUPPLY (PSU)**

- Universal input
- High efficiency
- Low ripple and noise

10% OFF**\$23.52**Order Code
177216302**LCW25US24 - AC/DC
ENCLOSED POWER SUPPLY**

- Integrated connector cover
- Class B conducted & radiated emissions
- Output voltage trim $\pm 10\%$

10% OFF**\$15.79**Order Code
379029702**OKI-78SR-3.3/1.5-W36H-C -
DC/DC CONVERTER**

- 1 output
- Output power max: 4.95W
- Output voltage nominal: 3.3V

3% OFF**\$6.40**Order Code
276643602**A9F55204 - THERMAL
MAGNETIC CIRCUIT BREAKER**

- Fault tripping indication by a red mechanical indicator in circuit breaker front face
- Insulated terminals (IP20)
- Double clip for dismantling with comb busbar in place

30% OFF**\$161.62**Order Code
245214102**W54-XB1A4A10-15 -
THERMAL CIRCUIT BREAKER**

- Button extends for visual trip indication
- Push button to reset breaker
- 6.35mm straight quick connect tab termination

30% OFF**\$4.82**Order Code
965914502**VTX-214-005-005 - AC/DC
PCB MOUNT POWER SUPPLY
(PSU)**

- Low ripple and noise
- Fully Isolated Pri sec >4200Vrms
- 70°C Ambient temperature

20% OFF**\$12.67**Order Code
246466602**LCW15US05 - AC/DC
ENCLOSED POWER SUPPLY**

- LCW15 series regulated output convection cooled AC-DC power supply
- ITE & industrial approvals
- Integrated connector cover

10% OFF**\$13.13**Order Code
379028602**ROE-0505S - ISOLATED
THROUGH HOLE DC/DC
CONVERTER**

- 1:1 Input range
- Efficiency to 75%
- Operating temperature range: -40°C to 85°C

45% OFF**\$5.41**Order Code
221859702**S202-C25 - THERMAL
MAGNETIC CIRCUIT BREAKER**

- Miniature circuit breaker from ABB's System pro M compact S200 series protects cables & lines from overload & short circuits throughout its lifetime
- Its patented connection terminal ensures simple and safe contacting and handling by means of a pressure plate

10% OFF**\$69.35**Order Code
249280302**BR1C30UC - BRANCH
CIRCUIT BREAKER**

- Current rating: 30A
- Mounting: DIN Rail
- Voltage Rating V DC: 80V

20% OFF**\$35.57**Order Code
282478902

3MN6 - SNAP ACTION BASIC SWITCH**Honeywell**

- Microswitch type: Standard
- Microswitch actuator: Pin plunger
- Contact configuration: DPDT

\$122.84Order Code
117942102**CW1B-A1E10R - INDUSTRIAL PUSHBUTTON SWITCH****IDEC**

- Sleek and stylish switches with 2.5mm thick bezel
- ø22.3mm mounting hole compliant with IEC 60947-5-1
- Maintained/momentary operation facilitated

20% OFF**\$22.97**Order Code
283273202**D6R00 F2 LFS - PUSHBUTTON KEYBOARD SWITCH****C&K**

- Switch operation: Off-on
- Contact configuration: SPST-NO
- Round non-illuminated white switch

10% OFF**\$1.36**Order Code
378055602**1301.9316 - TACTILE SWITCH****SCHURTER**
ELECTRONIC COMPONENTS

- Reliable tactile feedback
- Simple assembly, long life time and short lead time
- IP40 protection rating

30% OFF**\$0.309**Order Code
121776502**XB4BS8444 - EMERGENCY STOP SWITCH**Life Is On | **Schneider Electric**

- Contact configuration: DPST-NC
- Switch operation: Turn to release
- Switch terminals: Screw clamp

20% OFF**\$60.80**Order Code
278058702**C1572AAAAA - ROCKER SWITCH****arcoelectric**

- Shallow curve profile
- 22.3 x 27.2mm panel cut-out
- 6.3 x 0.8mm terminal size

40% OFF**\$7.86**Order Code
225207602**CW1300-1 - TILT SWITCH****ASSEMTECH**

- Maximum switching voltage is 60VAC/DC
- Maximum switching current is 0.25A
- 22.3mm length

40% OFF**\$3.12**Order Code
54061402**615602263 - SWITCH BEZEL****C&K**

- Black frame with matte finish and nylon construction
- Designed for J51, J61 and J91 actuators
- Frame snaps into panel opening and is independent from switch mounting

30% OFF**\$0.653**Order Code
120135702**1241.6824.1124000 - VANDAL RESISTANT SWITCH****SCHURTER**
ELECTRONIC COMPONENTS

- Blue LED
- 3000W rated switching capacity
- <100mR at 12VDC/1A contact resistance

30% OFF**\$58.66**Order Code
163757802**MP008558 - PUSHBUTTON SWITCH****multicomp PRO****New**

- Panel cutout diameter: 20mm
- Contact configuration: DPST
- Switch operation: On-off

40% OFF**\$5.03**Order Code
383394602**MK15-B-2 - REED SWITCH****MEDEA**
ELECTRONICS

- High power switches
- Excellent for low power operations
- No external power required for sensor operation

20% OFF**\$1.44**Order Code
107948402**LSZ3A - SWITCH CONTACT BLOCK****Honeywell**

- For use with: Honeywell HDLS series limit and enclosed switches
- Contact current max: 6A
- Contact voltage AC max: 600V

5% OFF**\$123.81**Order Code
118424602**MCR17-10B(RED) - SAFETY COVER****multicomp PRO**

- Mounting hole diameter: 12.2mm
- Accepts switches with standard 12mm diameter mounting stems
- Accepts standard 17.5mm switch handles

40% OFF**\$3.82**Order Code
225112302

LSZ51D - SWITCH ACTUATOR

Honeywell

- For use with: Honeywell HDLS series limit and enclosed switches

10% OFF

\$29.62Order Code
997600002

855-305/300-509 - CURRENT TRANSFORMER

WAGO

- CT construction: Pluggable
- Current ratio: 300:5
- Power rating: 5VA

10% OFF

\$236.29Order Code
378721602

VB1.0/2/6 - PCB TRANSFORMER

BLOCK

- Designed for high ambient temperatures
- Minimum size at high output
- Also with dual output voltage for series or parallel connection

45% OFF

\$6.94Order Code
113162202

7490100111A - TRANSFORMER

WE

- Minimum inductance is 350µH
- Turn ratio is 1:1
- Operating temperature range from -40°C to 105°C

40% OFF

\$4.45Order Code
240105902

CF06333CT/1/10 - FUSE

multicomp

- Blow characteristic: Time delay
- Sand filled
- Fuse current: 1A

40% OFF

\$3.80Order Code
187108202

ZBE102 - CONTACT BLOCK

Life Is On | **Schneider Electric**

- SPST-NC contact configuration
- Rated operational current 6A at 120V, AC-15, A600 conforming to EN/IEC 60947-5-1
- Screw clamp terminals

45% OFF

\$16.99Order Code
305300302

MCTA120/12 - TOROIDAL TRANSFORMER

multicomp PRO

- Power rating ranges 120VA
- Secondary voltage ranges 2 x 12V
- Dual primary winding

20% OFF

\$43.80Order Code
953051702

P2781 - LINE MATCHING TRANSFORMER

ETAL

- Insertion loss is 2dB
- Return loss is 18dB
- 7mm seated height

20% OFF

\$6.87Order Code
113084702

1005940-1 - VIBRATION SENSOR

TE

- Impedance: 60Mohm
- Sensor mounting: Through hole
- Sensitivity: 260pC/G

40% OFF

\$7.51Order Code
274887802

70-125-40/4A - FUSE

SIBA

- Blow characteristic: Very fast acting
- Voltage rating VAC: 600V
- Fuse current: 4A

40% OFF

\$3.75Order Code
117511402

1SBN010010R1010 - CONTACT BLOCK

ABB

- Switch terminals: Screw clamp
- Contact current max: 6A
- Contact voltage AC max: 690V

20% OFF

\$10.90Order Code
864086602

44201 - PCB TRANSFORMER

myrra

- Power rating range 3.2VA
- 230VAC primary voltages
- Secondary voltage ranges 2 x 12VAC

45% OFF

\$8.08Order Code
121459402

SM91527L-E - BMS TRANSFORMER/CMC

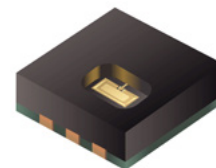
BOURNS

- Working voltage up to 1,500 VDC
- Leakage inductance: 4.5 µH maximum at 100 kHz, 0.1 V
- 6 pins

30% OFF

\$5.54Order Code
377770502

BPS240-D2P0-S10E - HUMIDITY SENSOR

BOURNS

- Sensor output: Digital
- Supply voltage: 1.62VDC to 5.5VDC
- Sensor terminals: SMD

40% OFF

\$4.61Order Code
376536402

0473.500MAT1L - FUSE

Littelfuse

- Fuse current: 500mA
- Voltage rating VAC: 125V
- Blow characteristic: Slow blow

40% OFF

\$1.97Order Code
278648802

DEMYSTIFYING AI AND ML WITH EMBEDDED DEVICES

Machine learning (ML) enables electronic systems to learn from existing data and use their own knowledge to measure, predict, and make decisions. Since these types of applications normally require high computational power, they always run on PCs and cloud servers. Thanks to innovative techniques, algorithms and robust workflows, machine learning can now be carried out directly on embedded devices.

Benefits of ML on embedded devices for industries

ML on embedded devices has many advantages. It eliminates the need to transfer and store data on cloud servers, and reduces data loss and privacy leaks during data transfer. It also reduces the theft of intellectual property, personal information, and trade secrets. The use of embedded hardware running on ML-based models is also sustainable as it has a much smaller carbon footprint.

Continuous progress in industry 4.0, including sensors and smart devices that are connected via IoT, makes new applications for AI / ML algorithms. Machines are equipped with hardware and software components for data connection and manipulation. From the point of view of data science, this new model will extract knowledge from monitored assets due to the use of ML and automated improvement methods. One of the most important features of AI / ML in this field is an effective prediction of abnormal behaviour in industrial machinery, industrial tools, and processes. In addition, the integration of advanced sensors in artificial intelligence, IoT computational technologies, and cloud computing includes industrial robots, smart decisions, predictive skills, and maintenance with its advanced autonomous behaviour in improving production, help, and cooperation with employees and workers in carrying out their duties.

A recent Microsoft study found that American manufacturers using AI performed 11.5% better than those who did not. AI helps industry. Why? The applications are wide. And the statistics are fascinating. According to McKinsey, 50% of companies investing in AI over the next five to seven years will be able to double their cash flow.

According to a recent Forbes Insights for AI survey, 44% of automobiles and product developers believe AI will be key to manufacturing over the next five years, while nearly half (49%) said it would be essential to their success.



AI use case

The rapid emergence of AI-based technologies in predictive maintenance takes it to a new level. In the food industry and industrial automation, surveillance ratings have gotten "smarter" than ever in terms of the capabilities they can examine. AI-powered monitoring software can identify a faulty machine before a real problem or unforeseen event occurs. For example, in the factory, the combination of IIoT and technology training allows companies to work very well in the field of various changes such as heat, vibration, light, sound, and humidity of various types of machines.

The technology has been incorporated into asset management for a variety of applications over the years. Given the evolution of technology in the community, it is not surprising that new technologies and applications continue to appear in asset management. Modern technologies, including AI and ML, are based on existing processes and technologies.

We generally divide asset management technology into three main categories:

- User experience and interfaces
- Efficient performance
- Investment activities

In each of these areas, technology helps improve efficiency, risk management, and decision-making. Most importantly, all of these technologies have dedicated individuals and professionals involved in monitoring the results of the technologies and making more informed decisions.

Image and face recognition are classic applications for artificial intelligence and machine learning in production, where they can be used to secure employee access, track attendance and prevent fraud and theft.

In another example, the Sony Technology Centre in the UK introduced image processing as part of a project that uses artificial intelligence to monitor product variety and quality on the factory floor. More than 150 high-quality Raspberry Pi SBC and Raspberry Pi cameras were used to evaluate processes such as the assembly of components on separate circuit boards to ensure compatibility.

The Embedded Machine Learning Environment

Industrial and Internet of Things (IoT) applications are now often based on Single Board Computers (SBCs), with some 50 per cent of engineers, surveyed by element14, using these development boards in their designs. Machine learning applications, embedded in a variety of embedded hardware and SBCs, are based on tools and techniques that enable the development and implementation of ML models on resource-constrained nodes. Therefore, the embedded machine learning system comprises hardware vendors, particularly original equipment manufacturers (OEMs), where ML models are deployed and implemented. In addition, it expands the global machine learning ecosystem to include tools and technologies for developing, deploying and implementing ML applications on embedded devices, including IoT devices. In the latter case, ML applications are rightly called AIoT (IoT) devices.

There is now a comprehensive set of embedded hardware that can implement machine learning and deep learning programs. Many devices are inexpensive and can be used flexibly in various IoT applications, some are great for educational purposes. For example, IoT developers familiar with the Arduino ecosystem today can use the Arduino Nano 33 BLE Sense board based on Nordic Semiconductor's SoC to develop TinyML applications. The board has several built-in sensors, including a humidity sensor, temperature sensor, air pressure sensor and microphone, as well as motion sensors, proximity sensors, light colour and light intensity. As such, it is versatile and suitable for a wide variety of uses. Another example is the SparkFun's Edge Development Board, which supports in-depth learning programs like voice transcription and motion detection. The board is based on Ambiq Micro's Apollo3 Blue microcontroller running TensorFlow Lite, one of the most popular environments for deep learning applications on embedded devices. Recently, Thunderboard Sense 2, an embedded development platform for developing IoT products, was also upgraded with integrated machine learning functions. The collaboration between SiLabs and Edge Impulse makes it possible to support the development of machine learning applications in various microcontrollers (MCUs), especially MCUs that support EFR32 / EFM32 communication. In this way, diverse business functions can be developed for different applications, such as machine monitoring and audio event analysis.

The development of machine learning models relies on popular data science libraries and tools, such as Python Machine Learning libraries, examples being Scikit-Learn and Keras over TensorFlow, as well as relevant tools such as Jupyter notebooks designed for data scientists and researchers. However, the built-in machine learning ecosystem also includes libraries specially designed to support inferences on devices with limited computing power. This is, for example, the case with TensorFlow Lite, which supports inference on the device. In addition, there are also TinyML-oriented libraries, which allow the deployment of models on devices with very few kilobytes of memory such as microcontrollers.

For example, the TensorFlow Lite Micro core can hold 16 KB on an Arm Cortex-M3 and can run various machine learning and deep learning models.

Microsoft is an industry leader in the rollout of its Azure Sphere IoT platform, which also provides the Linux kernel operating system for embedded microcontrollers (MCUs) used in IoT terminals. Common uses include a Starbucks pilot program of integrated MCUs for Azure Sphere to collect telemetry from coffee machines in its stores. The company expects the data it collects to help identify potential problems before repairing coffee machines and other devices in the business. Azure MCUs are inexpensive, offer a variety of connectivity options, including cellular and Ethernet, and can be supported by a variety of development boards and start up kits.

SBCs for AI

element14 has a wide range of SBC to support embedded AI applications. This includes the most famous SBC, the Raspberry Pi 4 model B which is available with DDR4RAM up to 8 GB.

The Arduino Portenta is a powerful SBC. Asymmetric kernels can run high-level code such as protocol stacks, ML, or even interpreted languages like MicroPython or JavaScript at the same time.

CONCLUSION

In the near future, the convergence of artificial intelligence and embedded systems will lead to enormous advances in image and video recognition. Advances in embedded technology are helping us build imaging devices with higher processing power and smaller footprints. At the same time, AI offers much-needed algorithms for real-time image and video recognition. Implementing these intelligent public safety imaging devices is beneficial because it detects potentially dangerous behaviour. Such systems are also used to improve inventory management in factories, control transportation systems, and develop industrial automation.

To explore more great content, visit the Technical Articles tab on

nz.element14.com/connect-magazine

or scan the QR code



G4A01110C - FUSE

THERMIDISC



- Current interrupt capacity up to 10A at 250VAC
- Functioning temperature (Tf) range from 72°C to 257°C
- One shot operation cuts off electrical power

30% OFF

\$1.11

Order Code
18702102

BK/GMA-8-R - FUSE

EATON
Powering Business Worldwide

- Fast acting
- 0.009Ω typical DC cold resistance
- 110mV typical voltage drop

40% OFF

\$0.392

Order Code
115064102

DG85B-8011-96-1006-M1 - AUTOMOTIVE RELAY

DURAKOOL



- Flat blade connection mode
- Metal bracket
- High resistance to inrush current

20% OFF

\$7.51

Order Code
134295002

PCV-0-473-05L - INDUCTOR

Coilcraft



- Inductance: 47μH
- Inductor construction: Unshielded
- RMS Current (Irms): 6A

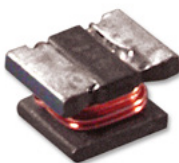
30% OFF

\$3.73

Order Code
245764702

744045215 - POWER INDUCTOR (SMD)

WE



- Inductance: 150μH
- RMS current (Irms): 220mA
- Inductor construction: Unshielded

\$0.693

Order Code
180041702

0314010.MXPXX - FUSE

Littelfuse



- Blow characteristic: Fast acting
- Fuse current: 10A
- Voltage rating VAC: 250V

45% OFF

\$0.906

Order Code
159677602

0685T1000-01 - FUSE

bel
POWER SOLUTIONS & PROTECTION

- Surface mounting
- Blow characteristic: Slow blow
- Breaking capacity current: 50A

30% OFF

\$0.306

Order Code
283485302

ALQ1F12 - POWER RELAY

Panasonic



- Contact configuration: SPDT
- Coil voltage: 12VDC
- Contact current: 10A

20% OFF

\$3.16

Order Code
327424202

IHLP6767GZER4R7M11 - POWER INDUCTOR (SMD)

VISHAY
THE WORLD OF ELECTRONICS

- RMS Current (Irms): 30A
- Inductance: 4.7μH
- Saturation current (Isat): 21

3% OFF

\$3.00

Order Code
184558902

241802B92200G - HEAT SINK

AAVID
THERMAL MANAGEMENT

- 22.9mm x 6.1mm x 58mm
- Thermal resistance: 5.7°C/W
- For eighth brick DC/DC converters

30% OFF

\$7.49

Order Code
143681302

0001.2504 - FUSE

SCHURTER
ELECTRONIC COMPONENTS

- Blow characteristic: Time delay
- Fuse current: 1A
- Voltage rating VAC: 250V

45% OFF

\$0.549

Order Code
136084802

MJN2CF-DC12 - RELAY

OMRON



- Contact configuration: DPDT
- Coil voltage: 12VDC
- Contact current: 10A

20% OFF

\$26.92

Order Code
447763702

SRM-1C-SL-24VDC - GENERAL PURPOSE RELAY

IMO



- Operating temperature range: -40°C to 85°C
- Contact configuration: SPDT
- Coil voltage: 24VDC

30% OFF

\$1.73

Order Code
109402002

CLF12577NIT-100M-D - POWER INDUCTOR (SMD)

TDK



- Automotive grade AEC-Q200 qualified
- Inductance value range of 10μH
- Tolerance range from ±30% and ±20%

45% OFF

\$2.45

Order Code
266786902

FK 244 08 D2 PAK - HEAT SINK

fischer elektronik



- Direct assembly on the board by solderable surface
- Thermal resistance: 29.3°C/W
- 8mm x 10mm x 17.8mm

45% OFF

\$1.73

Order Code
431404902

637-10ABEP - HEAT SINK

WAKEFIELD THERMAL



- High efficiency
- For board level power semiconductor
- Thermal resistance: 5.8°C/W

30% OFF

\$0.987

Order Code
121949502DSU9H30//5G59//01024//
G6R//**DW** - ROTARY
ENCODER

Sensata • BEI Sensors

New



- Encoder technology: Mechanical
- Encoder type: Incremental
- Encoder resolution: 1024PPR

30% OFF

\$1,398.28

Order Code
381908002

TT33MH - TIMER

TEMPATRON

New



- 4 digit red LED display dual timer
- 5 programmable timing modes
- Time ranges from 99.99sec to 9999hrs

10% OFF

\$155.93

Order Code
382943402VEP PLUG AU - AC INPUT
PLUG

XP XP Power



- Interchangeable AC plug specifically for VEP Series AC to DC power supplies
- For VEP Series AC to DC power supplies

20% OFF

\$2.44

Order Code
277994902

4650N - AC AXIAL FAN

ebmpapst



- High product quality
- Can be operated at 50 or 60Hz
- Long service life

20% OFF

\$42.62

Order Code
959971102

EAR-007 - SPLITTER

Sensata • BEI Sensors

New



- Usable with standard incremental encoders
- Supplies power to encoder from 11V to 30V
- Permits to address signal to 2 different motion devices

10% OFF

\$335.10

Order Code
381895402AP/W/SWITCHED/VC -
SOUNDER

Fulleon



- 32 tones
- Second tone for two stage alarm
- Automatic synchronisation

40% OFF

\$39.40

Order Code
146651602

C503B-RCN-CX0Y0AA1 - LED

CREE LED



- 4180 to 8200mcd Luminous intensity
- Operating temperature range: -40°C to 100°C
- Red

20% OFF

\$0.209

Order Code
2419071022410ML-05W-B70-B00 - DC
AXIAL FAN

NMB



- Bearing Type: Ball bearing
- 6800RPM speed rating
- Operating temperature range: -10°C to 70°C

20% OFF

\$13.11

Order Code
823520102WISE-S614-A - INDUSTRIAL
WIRELESS I/O MODULE

ADVANTECH



- Channels: 4
- Resolution: 16-bit
- Sampling rate: 1Hz per channel

5% OFF

\$303.00

Order Code
339505802MCSMT-1325S12BQ - LINEAR
SOLENOID

multicomp PRO



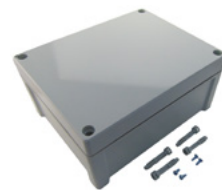
- 12V tubular solenoid with push operation
- Solenoid duty cycle: Continuous
- Coil termination: Wire leaded

40% OFF

\$18.32

Order Code
200878502TA 241911 ENCLOSURE -
PLASTIC ENCLOSURE

FIBOX



- UL94HB flammability rating
- Wire sealing or sealing plugs for added security
- 107mm x 191mm x 240mm

40% OFF

\$18.91

Order Code
142267102

NSYTBS292412 - PLASTIC ENCLOSURE



- One piece moulded body
- Outside sealed area lock - Flat screwdriver captive screw
- 650°C fire resistance

Life Is On

Schneider
Electric

10% OFF

\$60.19

Order Code
249945802

INTERCONNECT

Find your perfect connection with our selection of cables, wire, connectors, accessories, assemblies and more.

To view more products, scan the QR code or visit us online at: nz.element14.com/connect38_interconnect



D38999/20FJ61SN - CIRCULAR CONNECTOR



- High reliability, moisture and corrosion resistant
- Outstanding EMI, RFI shielding protection
- 500 mating cycles

\$130.07

Order Code
217328402

97-3102A-22-14P - CIRCULAR CONNECTOR



- 100 mating cycles, IP67 environmental protection
- Six shell styles, single key/keyway polarization
- High reliability, moisture and corrosion resistant

20% OFF
\$46.33

Order Code
15163402

MP007684 - CIRCULAR CONNECTOR



- Female 90 degree Cable connector
- 3 contacts
- Threaded mating

30% OFF
\$9.50

Order Code
378009402

GDM3011.BLACK - RECTANGULAR POWER CONNECTOR



- Black housing
- Maximum 1.5mm² conductor size
- 250VAC/DC rated voltage

30% OFF
\$2.86

Order Code
121530202

D38999/24FB35PN - CIRCULAR CONNECTOR



- High reliability, moisture, corrosion and fluid resistant
- Metal to metal bottoming and superior contact stability
- Durability of 500 mating cycles and 48hr salt spray exposure

10% OFF
\$70.53

Order Code
349472702

HR10A-10P-12S(73) - CIRCULAR CONNECTOR



- Plug shell type
- 12 contacts
- Current rating of 2A

30% OFF
\$22.21

Order Code
182697602

206708-1 - CIRCULAR CONNECTOR



- Connector shell size 13
- Receptacle are available with square flange and free hanging mounting
- Standard and reverse connections

20% OFF
\$5.71

Order Code
369244902

09200032611 - REGULAR HAN INSERT



- Mechanical working life of greater than or equal to 500 mating cycles
- Limiting temperature range from -40°C to 125°C
- Rated current of 10A

40% OFF
\$19.19

Order Code
117814802

MS3101E16S-1S - CIRCULAR CONNECTOR



- 5 shell styles with 19 shell sizes
- Single key/keyway shell polarisation
- High reliability, moisture and corrosion resistant

5% OFF
\$67.76

Order Code
248275202

UTG61619PN - CIRCULAR CONNECTOR



- Minimum insulation resistance of 5000Mohm
- Nickel plated bayonet ring
- Moulded-in contact marking (standard version)

30% OFF
\$17.38

Order Code
10532102

192990-0060 - CIRCULAR CONNECTOR CONTACT



- Crimp contact for use with trident T2P contact system
- Brass contact body with tin plating
- Accepts 18 to 16AWG wires

40% OFF
\$0.47

Order Code
118830102

71600-016LF - IDC CONNECTOR



- Gender: Female
- Pitch spacing: 2.54mm
- Connector mounting: Cable mount

40% OFF
\$1.66

Order Code
110391902

2041262-1 - CARD EDGE CONNECTOR

- Dual side edge connector
- 1mm card thickness
- Surface mounting

30% OFF**\$1.03**Order Code
339867602**FC68148S - DC POWER CONNECTOR**

- Ø2.1mm Pin (Discrete)
- Electrical Rating: DC10 - 2A / 12V; DC8 - 1A / 12V
- Gender: Jack

30% OFF**\$1.17**Order Code
188930902**172100 - RF / COAXIAL CONNECTOR**

- Threaded coupling mechanism
- Standard polarity
- Standard thread direction

10% OFF**\$8.45**Order Code
214453302**09 69 211 5072 - COMBINATION LAYOUT D SUB CONNECTOR**

- 2 power positions
- 5 signal contacts
- S4 performance level

30% OFF**\$8.29**Order Code
120758202**MP60964N - XLR CONNECTOR**

- 4 contacts
- Gender: Plug
- Mounting: Cable mount

30% OFF**\$4.24**Order Code
377765702**L712AS - DC POWER CONNECTOR**

- Current rating is 5A up to 30VDC at 65°C
- Initial contact resistance is 10mohm
- Maximum dielectric withstanding voltage is 500VAC

5% OFF**\$9.23**Order Code
187116602**GDS307-1KK - POWER CONNECTOR**

- 4 contacts
- Cable mounting
- Screw termination

10% OFF**\$4.17**Order Code
283611502**142-0701-801 - RF / COAXIAL CONNECTOR**

- End launch
- Gold-plated finish
- Round contact

20% OFF**\$4.60**Order Code
160859202**172-E09-203R001 - D SUB CONNECTOR**

- White colour insulator
- Non-removable contacts
- 5A current rating

30% OFF**\$3.23**Order Code
212446202**PSG01276 - XLR CONNECTOR**

- 3-pin XLR chassis socket
- 60VAC Voltage ratings

20% OFF**\$1.55**Order Code
128089402**1636 07 - DC POWER CONNECTOR**

- Straight version power supply plug with solder eyes and bend protection
- 10A, 24VDC rating
- PBT GF insulating body

30% OFF**\$5.83**Order Code
252361602**MP002462 - MODULAR CONNECTOR**

- Lock/screw mating
- RJ45 connector
- IP68 rated

30% OFF**\$24.63**Order Code
336967202**690-0800 - DIN AUDIO / VIDEO CONNECTOR**

- Number of contacts: 8 contacts
- Connector mounting: PCB Mount
- Contact termination: Through hole vertical

40% OFF**\$7.01**Order Code
119401502**5502-15PA-01-F1 - D SUB CONNECTOR**

- 5mΩ maximum contact resistance
- 1000MΩ minimum insulation resistance
- 1000VAC for one minute minimum dielectric withstanding voltage

40% OFF**\$0.606**Order Code
108468602**0462-201-20141 - RECTANGULAR POWER CONTACT**

- Suitable for use with HD30/ HDP20/DRG/DTM/DRB/STRIKE series
- Nickel plating
- Contact material is copper alloy

10% OFF**\$1.92**Order Code
184193302

1326030-3 - AUTOMOTIVE CONNECTOR CONTACT



- Accepts 16AWG to 14AWG wires
- Socket
- Crimp termination

40% OFF

\$0.555

Order Code
339384802

MHCCOV-9SC-LG - D SUB BACKSHELL



- Operating temperature range: -55°C to 110°C
- UNC 4-40 (Short) Thumbscrews
- Light grey colour

30% OFF

\$0.503

Order Code
393801302

04T-JWPF-VSLE-S - CONNECTOR HOUSING



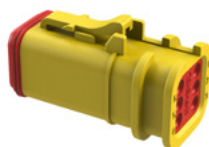
- 3AAC/DC current rating
- 100VAC/DC voltage rating
- Initial value/10mΩ maximum contact resistance

45% OFF

\$1.62

Order Code
384985502

AT06-6S-OMYEL - AUTOMOTIVE CONNECTOR HOUSING



- For use with: Amphenol AT series size 16 automotive socket contacts
- Number of positions: 6 ways
- Current rating: 13A

30% OFF

\$2.35

Order Code
339990302

M39029/64-369 - D SUB CONTACT

TriStar



- Contact gender: Pin
- Accepts 24AWG to 20AWG wires

30% OFF

\$0.61

Order Code
281890702

MKVG20 - CONNECTOR BACKSHELL



- Connector backshell hood with a single lever
- Suitable for MK series ILME multipole connector inserts

20% OFF

\$3.14

Order Code
232059102

PHR-7 - CONNECTOR HOUSING



- 7 ways
- Polyamide 66, UL94V-0 material
- Natural colour

50% OFF

\$0.088

Order Code
361623002

PXMBNI12RPM08XRJM16 - CONNECTOR ADAPTER



- Reliable industry standard (EN 61076-2-109) screw locking mechanism
- 0.5A rated current
- 800V rated impulse voltage

20% OFF

\$48.71

Order Code
290146802

MHDTZK-9-BK-K - D SUB BACKSHELL



- Re-openable
- Excellent EMI shielding
- Top cable entry

45% OFF

\$8.82

Order Code
46305002

1123343-1 - CONTACT



- 4A typical current rating
- Copper alloy base
- Accepts 24AWG to 20AWG wire

45% OFF

\$0.105

Order Code
237430002

01022-250 - CONNECTOR HOUSING



- Housing material is polyamide 66
- For use with 6.3mm receptacle tab terminals

45% OFF

\$0.06

Order Code
362552702

27-1040 - CONNECTOR ADAPTER



- BNC female to dual banana plug adapter
- Gold-plated brass BNC central contact
- Nickel-plated brass dual banana plugs

30% OFF

\$7.55

Order Code
278226202

NE8FDP - IN-LINE ADAPTER



- Approved latch lock system
- Mountable from the front or rear of the panel
- Bronze (CuSn8) contacts with 0.2µm Au over Ni plating



NEUTRIK®

10% OFF

\$16.80

Order Code
120203202

DG909MF2-P - D SUB ADAPTER

- Allows cables to mate at a 90° angle to avoid nearby obstructions
- 1" Low profile for optimum clearance allowance
- 100% Shielding throughout for protection against EMI/RFI

20% OFF**\$16.50**Order Code
291930802**75869-301LF - PIN HEADER**

- Connector system: Wire-to-Board
- Pitch spacing: 2.54mm
- 2 rows, 10 contacts

30% OFF**\$1.02**Order Code
288609202**M20-9980545 - PIN HEADER**

- 6.1mm mating height
- Number of contacts: 10
- Available in gold and tin over nickel finish

40% OFF**\$0.38**Order Code
102223502**ERPE2.5/4 - DIN RAIL MOUNT TERMINAL BLOCK**

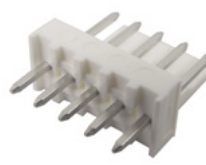
- DIN rail earth terminal block with screw connection
- Accepts 26 to 12AWG wire range

20% OFF**\$2.55**Order Code
101539902**CTSN431/12 - STANDARD TERMINAL BLOCK**

- Number of contacts: 12 contacts
- Pitch spacing: 8mm
- Maximum wire size accepted: 14AWG

45% OFF**\$4.43**Order Code
232105802**3022276 - CONNECTOR ACCESSORY**

- PA construction, grey colour
- Design width of just 5.2mm
- Parking option for bridges and plugs

40% OFF**\$1.32**Order Code
833329702**22-27-2051 - PIN HEADER**

- Brass material with tin plating
- Flammability rating is 94V-0
- Current rating is 4A and voltage rating is 250V

40% OFF**\$0.484**Order Code
973167902**2211SM-04G-B1-TB - PIN HEADER**

- Board-to-Board connector
- Surface mounting
- Pitch spacing: 2.54mm

20% OFF**\$0.106**Order Code
284716902**HYKS-03212PP - PANEL MOUNT BARRIER TERMINAL BLOCK**

- 12-way white through-hole Pillar Terminal Block
- 85°C to 110°C working temperature range
- Kwik snap range

40% OFF**\$1.66**Order Code
205662702**773-173 - STANDARD TERMINAL BLOCK**

- PUSH WIRE Connector for Junction Boxes
- Solid & Stranded Conductors: 2.5-6mm²
- Current Rating: 41A

\$0.411Order Code
207479302**15324973 - CONNECTOR ACCESSORY**

- Accessory type: Cable seal
- For use with: Aptiv automotive connectors

45% OFF**\$0.075**Order Code
288811302**B2B-XH-A (LF)(SN) - PIN HEADER**

- Current rating of 3A
- Voltage rating of 250VAC/DC
- Temperature range from -25°C to 85°C

40% OFF**\$0.10**Order Code
151627602**51251782 - CONNECTOR KIT**

- Kit contents: 2002, 2004 & 2006 Series DIN rail terminal blocks, marker, screw drivers, jumpers, end plates

5% OFF**\$254.17**Order Code
225339302**222-412 - PLUGGABLE TERMINAL BLOCK**

- Compact connecting terminal for up to 2 stripped flexible conductors
- Conductor size from 0.08 to 4 mm²
- Voltage Rating: 400V

45% OFF**\$0.871**Order Code
130051102**MP008521 - WIRE-TO-BOARD TERMINAL BLOCK**

- White colour terminal block
- VDE and UL certification
- Accepts wire sizes 20AWG to 16AWG

40% OFF**\$1.06**Order Code
381746902

1776275-2 - WIRE-TO-BOARD
TERMINAL BLOCK



- Accepts 26AWG to 18AWG wire
- Orientation: Through hole right angle
- Wire connection method: Screw

40% OFF

\$0.681

Order Code
321932702

1287 - PCB TERMINAL



- Male Quick-fit terminal made of brass with tin plated finish
- Vertical mounting
- 0.25-inch stud/tab size

40% OFF

\$0.121

Order Code
267331402

37048-003-100 -
MULTIPAIRE CABLE



New



- This high quality custom BEI standard cable consists of four, low capacitance twisted pairs with an overall shield, extra large conductors for power and signal ground; all within an abrasion-resistant PVC jacket.
- Length: 100ft

10% OFF

\$374.75

Order Code
381893302

CTBP3051/2 - WIRE-TO-BOARD
TERMINAL BLOCK



- Wire size of 24AWG to 18AWG
- Ultra low profile
- Captive screws

45% OFF

\$0.341

Order Code
252754502

MS-4-140 - TERMINAL BLOCK
MARKER



- Flame-retardant material
- 0.031" thick bottom mount
- 0.125" white numerals

40% OFF

\$1.64

Order Code
120800702

0051001 - WIRE



- Nominal voltage is 300V/500V
- Flexible fine wire, tinned copper conductor
- 16AWG gauge wire

40% OFF

\$96.17

Order Code
128596202

MSTBVA2,5/3-G-5,08 -
TERMINAL BLOCK



- Green colour insulation
- Polyamide (PA) insulation material
- Tin contact surface

40% OFF

\$1.20

Order Code
370527402

SSM-108-L-DV - PCB
RECEPTACLE



- 5.2A current rating
- 10mΩ contact resistance
- Lead-free solderable

3% OFF

\$2.66

Order Code
230848702

PP001197 - WIRE



- Tri-rated, 18AWG flexible PVC equipment wire
- 1mm² nominal cross section area
- Nominal overall diameter is 3mm

20% OFF

\$43.38

Order Code
250143702

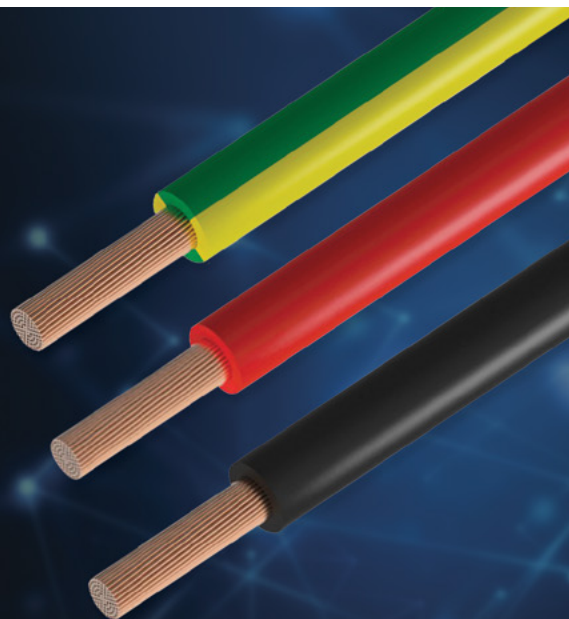
multicomp PRO

EXPLORE TRI-RATED CABLE AND WIRE

Multicomp Pro's high-temperature, flame retardant tri-rated wire is designed for use in electrical cabinets, switch control, relay and instrumentation panels of power switchgear, and for internal connections in rectifier equipment, motor starters and controllers.

Learn more: nz.element14.com/tri-rated-cable-and-wire

View featured Multicomp Pro products: nz.element14.com/connect38_multicomp_pro



0050104 - WIRE



- Temperature range from -50°C to 180°C
- 18AWG gauge wire
- Silicone based insulation

40% OFF

\$64.05Order Code
128595802

60.7033-22 RED 5M - WIRE



- Multistrand wire with 14AWG conductor
- Highly flexible stranded wire with reinforced, double-layer insulation
- 70 shore A Hardness

40% OFF

\$22.27Order Code
29775602

74005 GR002 - MULTICORE CABLE



- Ethernet, Cat5, Torsional Flex (2M flex life cycles)
- Supplied in continuous length in 1 metre multiples
- 22AWG

30% OFF

\$5.51Order Code
27767602

3365/16 - RIBBON CABLE



- Stranded wire provides flexibility and extended product life
- Zippable for branching or discrete termination
- Temperature rating: -20°C to 105°C

10% OFF

\$49.27Order Code
136964702

9416/076-8230/020-G6-020 - SENSOR CABLE



New



- Receptacle to free end
- 12 Positions
- 2m

25% OFF

\$122.94Order Code
381894102

SPC00444A002 25M - WIRE



- 22AWG gauge wire
- Reel length: 25m
- Silver plated solid and stranded copper conductors

30% OFF

\$43.51Order Code
118403602

PP001188 - WIRE



- Wire size of 16AWG
- Tri-rated flexible PVC equipment wire
- PVC (polyvinyl chloride) type T13 insulation according to BS EN 50363 standard

40% OFF

\$0.886Order Code
252808402

9058A BK005 - COAXIAL CABLE



- 20AWG
- 12.1lbs maximum pull tension
- 30.5m reel length

40% OFF

\$91.95Order Code
229072002

21.15.3935 - ETHERNET CABLE



- RJ45 Plug to RJ45 Plug
- Length: 2m
- LAN category: Cat6a

30% OFF

\$3.22Order Code
328725502

NM9-6MF - NETWORK CABLE



- Null modem DB9 male to female cable
- Length: 1.83m

40% OFF

\$4.91Order Code
283630102

SPC00443A002 25M - WIRE



- 24AWG gauge wire
- Silver plated solid and stranded copper conductors
- Reel length: 25m

40% OFF

\$24.60Order Code
118402002

WC-052 X10 - MULTICORE CABLE



- Insulation rating of -75°C to 260°C
- 4-core screened cable with PFA insulated 7/0.2mm tin-plated copper conductors
- 10m reel length

20% OFF

\$83.89Order Code
128966102

382A012-15-0 - HEAT SHRINK BOOT



- Provides strain relief sealing and mechanical protection on cable harness assemblies
- Moulded part type s transition(Y-Transition)
- Operating temperature range -75°C to 150°C

10% OFF

\$9.77Order Code
76930702

2965-0.3B - ETHERNET CABLE



- Designed for advanced bandwidth frequency systems and increased network speeds
- RJ45 Plug to RJ45 Plug
- 1ft cable

30% OFF

\$1.49Order Code
152615202

1487588-1 - USB CABLE



- Shielded USB type A to type B cable assembly
- USB 2.0
- Length: 2m

40% OFF

\$11.44Order Code
107667202

83-17339 - USB CABLE



- Reversible Type A Plug to Type A Receptacle
- Length: 1.83m

30% OFF

\$3.56

Order Code
280205402

K3749 - MAINS POWER CORD



- Mains Plug, Australia to IEC 60320 C13
- 2m length
- 10A current rating

3% OFF

\$6.36

Order Code
417891902

218323-1032 - CABLE ASSEMBLY



New



- DuraClick ISL receptacle to free end
- Audible click sound on mating provides mating confirmation
- Enclosed contact design protect contact against dust/debris, avoids tangling during harness assembly

20% OFF

\$2.72

Order Code
382060402

D20418-134 - D SUB JACK SCREW



- Screw length: 12.7mm
- Contains: Female screw lock, 1 nut, 3 washer, 1 lock washer and 1 hex nut

30% OFF

\$2.70

Order Code
275155202

MEC-3MF - D SUB CABLE



- D Sub 9 Position Plug to D Sub 9 Position Receptacle
- 3ft cable

30% OFF

\$3.48

Order Code
283638702

AUDL-73-1M - AUDIO / VIDEO CABLE ASSEMBLY



- Right angle 3.5mm stereo phone plug to free end
- Length: 1m

40% OFF

\$1.82

Order Code
121936002

H3161-01 - IC & COMPONENT SOCKET



- Current rating is 10A
- Operating temperature range from -55°C to 125°C
- Uses 4-finger beryllium copper contact clip

30% OFF

\$0.247

Order Code
14931802

TB3550 - DUAL LOCK RECLOSABLE FASTENER



- Five times stronger in tensile than typical hook-and-loop fasteners
- Easy peel-apart for quick access
- Durable enough to be opened and closed 1000 while maintaining 50% of its original strength

5% OFF

\$85.54

Order Code
212651302

X-428796A - MAINS POWER CORD



- Australia to IEC 60320 C13
- Length: 2.5m

30% OFF

\$8.32

Order Code
112439402

MP002496 - CIRCULAR CABLE ASSEMBLY



- Fits 20.75mm cut-out
- Solder or pre-wired termination
- Magnetic mating

30% OFF

\$35.35

Order Code
336971002

53102030 - O RING SEAL



- Ozone-resistant
- UV-resistant
- Operating temperature range of -30°C to 100°C

45% OFF

\$3.83

Order Code
185240802

PP002101 - STRAIN RELIEF



- Round cross section shape
- Cuts assembly cost and prolongs cord life
- 0.5 to 1.6mm maximum chassis thickness

40% OFF

\$11.82

Order Code
126902902

LM9013LY - WIRE MARKER



- Tie on printable plate
- Pre-perforated for rapid removal from sheet
- Use with a standard office laser printer



10% OFF

\$138.48

Order Code
170453302

SEMICONDUCTORS

Explore our range of semiconductors including, Integrated circuits (IC), discretes, transistors and more.

To view more products, scan the QR code or visit us online at: nz.element14.com/connect38_semiconductors



SRV05-4.TCT - ESD PROTECTION DEVICE



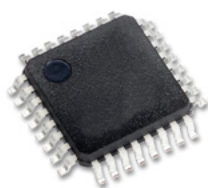
- ESD protection for high-speed data lines to IEC 61000-4-2 (ESD) $\pm 15\text{kV}$ (Air)
- Array of surge rated diodes with internal TVS diode
- Protects four I/O lines

30% OFF

\$1.28

Order Code
145641502

C8051F410-GQ - 8 BIT MCU



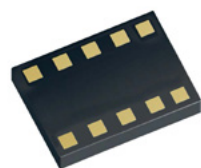
- High-speed pipelined 8051-compatible microcontroller core
- In-system, full-speed, non-intrusive debug interface
- On-chip voltage comparator

10% OFF

\$16.77

Order Code
129153002

MAXM17225AMB+ - DC/DC POL CONVERTER



- Input voltage: 400mV to 5.5V
- Output voltage: 1.8V to 5V
- Output current: 200mA

20% OFF

\$2.97

Order Code
379443702

NTBLS4D0N15MC - POWER MOSFET



- Transistor polarity: N channel
- Drain source voltage V_{ds} : 150V
- Transistor mounting: Surface mount

40% OFF

\$6.20

Order Code
352849802

WNS20H100CBJ - SCHOTTKY RECTIFIER



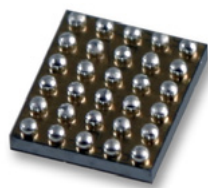
- Forward current $I_F(AV)$: 10A
- Diode configuration: Dual common cathode
- Maximum operating temperature: 150°C

45% OFF

\$0.866

Order Code
290240002

MAX30001GCWV+ - BIOPOTENTIAL AFE



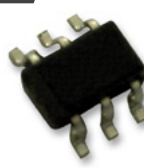
- IC Function: Biopotential (R-to-R detection) AFE
- Supply voltage: 1.1V to 2V
- Operating temperature: 0°C to 70°C

10% OFF

\$11.26

Order Code
388973202

TSC214IYCT - CURRENT SENSE AMPLIFIER



- Input bias current: 28µA
- Operating temperature: -40°C to 125°C
- Bandwidth: 40kHz

40% OFF

\$1.96

Order Code
386462902

MMBT2222A,215 - BIPOLAR (BJT) SINGLE TRANSISTOR



- NPN switching transistor housed in a plastic package
- Suitable for use with the switching and linear amplification
- High current

45% OFF

\$0.151

Order Code
175793402

SMA6F26A-M3/H - TVS DIODE



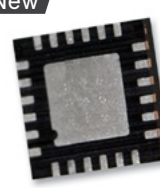
- TVS polarity: Unidirectional
- Clamping voltage V_c max: 53.3V
- Reverse stand-off Voltage V_{rwm} : 26V

45% OFF

\$0.242

Order Code
381867702

LAN8671B1-E/U3B - ETHERNET CONTROLLER



- Data rate: 10Mbps
- Ethernet type: IEEE 802.3
- Supply voltage: 3.135V to 3.465V

20% OFF

\$4.64

Order Code
387279602

PCA9670PW,118 - I/O EXPANDER



- Chip configuration: 8bit
- Bus frequency: 1MHz
- IC interface type: I2C

45% OFF

\$1.74

Order Code
289048302

BC337 - BIPOLAR (BJT) SINGLE TRANSISTOR



- 200°C/W junction to ambient in free air thermal resistance
- Collector emitter voltage $V_{(br)ceo}$: 45V
- DC collector current: 500mA

45% OFF

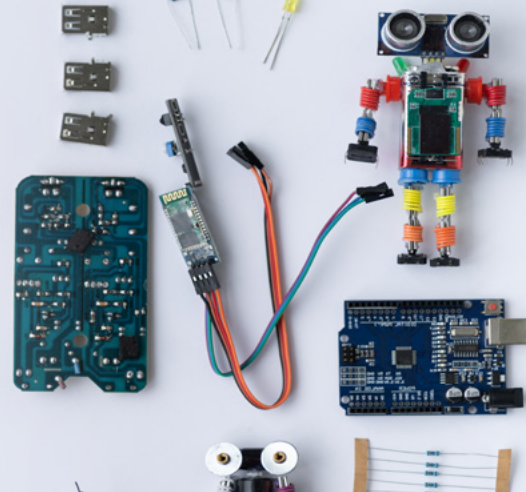
\$0.089

Order Code
157437902

SBC & DEVELOPMENT KITS

Meet your application needs with our latest range of Single Board Computers and Development Kits

To view more products, scan the QR code or visit us online at: nz.element14.com/connect38_SBC



PT4GY3 - DEVELOPMENT BOARD

pi-top



- Raspberry Pi 4 with 4GB RAM pre-installed
- Comes with 16GB SD card with pi-top OS, pi-top power supply unit and pi-top display cable
- 5hr battery, integrated heat sink, centrifugal fan, mini OLED, programmable buttons and speaker

3% OFF

\$346.13

Order Code
375495402

83-17990 - RELAY MODULE



- 5V trigger relay module
- For use with Arduino and Raspberry Pi

30% OFF

\$2.75

Order Code
280141202

ABX00023 - DEVELOPMENT BOARD



- Low power WiFi with cryptochip for SHA-256 encrypted secure communication
- Supports the Arduino Software IDE for development and programming
- Integrated Li-Po charging circuit allows the shield to run on battery or external power whilst charging the battery

3% OFF

\$63.17

Order Code
291756902

TEL0118 - IOT MODULE



- Built-in low power 32bit CPU, can be used as an application processor
- TCP / IP stack built-in protocol
- 3.3 to 5V operating voltage, 3.3 to 5.5V supply voltage

5% OFF

\$14.96

Order Code
351793802

ZYMKEY 41 - ZYMKEY 41



- Multifactor device identity and authentication
- Data encryption and signing engine
- Key generation and secure storage

\$63.49

Order Code
294771602

UJA1161A-EVB - EVALUATION BOARD



New



- Evaluate NXP's UJA1161A self-supplied CAN transceiver with standby mode into your CAN network
- Facilitate testing, evaluation of UJA116xA prd features in variety of MCU IO interface environment
- Supporting Arduino connection with microcontroller board

10% OFF

\$162.22

Order Code
386893702

A000066 - EVALUATION BOARD

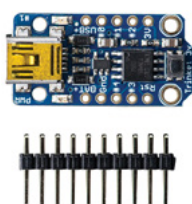


- Microcontroller board based on the ATmega328
- 14 digital input/output pins (of which 6 can be used as PWM outputs)
- Can be powered via the USB connection or with an external power supply

\$31.12

Order Code
207538202

1500 - DEVELOPMENT BOARD



- ATTINY85 on-board, 8K flash memory, 512 bytes of SRAM, 512 bytes of EEPROM
- 8MHz internal oscillator
- USB bootloader with a LED indicator

5% OFF

\$10.40

Order Code
236474402

PS-FLICK-HAT - FLICK HAT

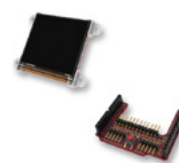


- Compatible with Raspberry Pi 3, Raspberry Pi 2, Raspberry Pi B+ and Raspberry Pi A+
- Gesture sensing range of up to 15cm
- Includes 3D tracking technology via MGC3130 chip

\$32.49

Order Code
268714402

UOLED-128-G2-AR - DAUGHTER BOARD KIT



- Arduino display module pack made up of an uOLED-128-G2 display module and an adaptor to easily connect an Arduino to the 4D systems display
- For use with: Arduino development boards

\$69.44

Order Code
245120102

NUCLEO-L476RG - DEVELOPMENT BOARD



- USB VBUS or external source (3.3V, 5V, 7 to 12V) and power management access point
- USB communication (LD1), user LED (LD2), power LED (LD3)
- Two push buttons - USER and RESET

5% OFF

\$25.36

Order Code
249381602

DFR0521 - INTERFACE BOARD



- 3-pin fool-proof connector x 6
- Headphone jack with volume knob
- External power port and ON/OFF switch

5% OFF

\$16.77

Order Code
294613302

BORG-FAN - BEAGLEBOARD FAN CAPE

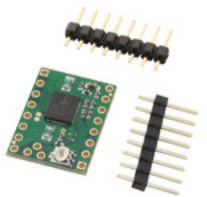
- Power the BeagleBone AI via USB Type-C port and the fan will automatically start working
- This fan solution will keep BeagleBone AI board below 38°C

5% OFF**\$37.61**Order Code
329107702**CY8CKIT-062S4 - EMBEDDED DEVELOPMENT KIT****New**

- 512Mbits quad SPI nonvolatile flash provides high-performance, safe NOR flash memory solution
- Rich analogue including dual SAR ADCs, DAC, Opamps and comparators
- Capable of operating in system deep sleep mode

\$100.07Order Code
385868202**STEVAL-IDB011V1 - EVALUATION BOARD**

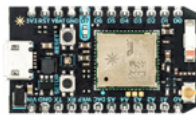
- Evaluation platform based on BlueNRG-355MC system-on-chip
- Bluetooth low energy evaluation board based on the BlueNRG-LP Bluetooth low energy system-on-chip
- Associated BlueNRG-LP development kit SW package including firmware and documentation

3% OFF**\$117.76**Order Code
352611302**TMC5120-STEPSTICK SPI - EVALUATION BOARD**

- The SilentStepStick is a stepper driver board for 2-phase motors, based on TMC2130
- The driver boards are compatible with StepStick and Pololu A4988

\$14.66Order Code
282215402**RN-42-EK - EVALUATION KIT**

- Evaluation board with USB interface
- Fully certified Bluetooth 2.1 + EDR/2.1.2.0/1.1 module
- Low power (8mA to 30mA connected, 2mA idle)

5% OFF**\$84.70**Order Code
232137702**PHNTRAYNOH - DEVELOPMENT BOARD**

- P-zero Wi-Fi module (802.11b/g/n Wi-Fi, 1MB flash, 128KB RAM)
- On-board RGB status LED (ext. drive provided)
- 18 mixed-signal GPIO and advanced peripherals

5% OFF**\$1,673.27**Order Code
288880302**PTN38003A-EVM - EVALUATION BOARD****New**

- PTN38003A USB 3.2 / DisplayPort 1.4 linear redriver evaluation board
- Targeted for enterprise access point, desktop PC/notebooks/servers and docking station
- Support USB 3.2 / DisplayPort 1.4 / Thunderbolt 3 / USB4 interfaces

\$417.91Order Code
386895202**EV_ICM-42688-P - EVALUATION BOARD****New**

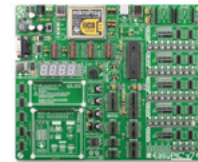
- Evaluation board for ICM-42688 high precision 6-axis MEMS motion tracking device that combines a 3-axis gyroscope and a 3-axis accelerometer

5% OFF**\$56.07**Order Code
386138302**EK-U1-VCU118-G - EVALUATION KIT**

- Dual 80-bit DDR4 component memory
- RLDRAM3 (2x36-bit) memory
- Dual QSPF28 interfaces

3% OFF**\$14,229.93**Order Code
280275402**AES-ACC-U96-JTAG - ADAPTER BOARD**

- High speed micro USB 2.0 connection
- Female UART header compatible with the Ultra96 UART male header
- Female JTAG header compatible with the Ultra96 JTAG male header

3% OFF**\$69.06**Order Code
291552202**MIKROE-798 - DEVELOPMENT KIT**

- 4 digit 7-seg display and Piezo buzzer
- MikroBUS sockets and USB connection
- PORT headers, PORT buttons and PORT LEDs are next to each other, and grouped together

\$225.50Order Code
228164602**ADM00924 - EVALUATION BOARD****New**

- 4 high voltage outputs (Up to 225V), single input voltage supply (VIN: 2.7V to 5.5V)
- Live data transmission (up to 22KS/s)
- Data file transmission (.csv and .wav format supported)

3% OFF**\$159.65**Order Code
386984702**EVM54504-BS-00A - EVALUATION BOARD****New**

- 5A, 16V, 4ch O/P, step-down power module with internal auto-compensation evaluation board
- 0.6 to 5.5V output voltage
- Continuous output current (IOUT) (4 channel output, 5A IOUT per channel)

\$41.92Order Code
385893702**MAX22531EVKIT# - EVALUATION KIT**

- Easy evaluation of MAX22531
- USB powered, no field-side supply required
- All input accessible

5% OFF**\$130.69**Order Code
389336202**TTL-232R-3V3-PCB - PCB MODULE**

- On board FT232RL provides single chip USB to asynchronous serial data transfer interface
- Entire USB protocol handled by the electronics on the PCB
- Connect directly to a microcontroller UART or I/O pins

10% OFF**\$31.63**Order Code
174036702

Browse Multicomp Pro's huge range of products and components, including test and tools, electronic components, connectors, cables and more.

To view more products, scan the QR code or visit us online at:
nz.element14.com/connect38_multicomp_pro



MP710067 - BENCH POWER SUPPLY

multicomp^{PRO}



- Low ripple and noise
- Constant voltage and current
- Overload protection

20% OFF

\$339.38

Order Code
313026302

DT-8806H - IR / INFRARED THERMOMETER

multicomp^{PRO}



- Measuring distance of 5cm to 15cm
- Temperature measuring range is 32°C to 42.5°C (body mode) & 0 to 60°C (surface mode)
- Accuracy is $\pm 0.3^\circ\text{C}$

40% OFF

\$89.83

Order Code
340752302

MP-881110-BLACK - CROCODILE CLIP

multicomp^{PRO}



- Nickel plated steel contact
- PVC insulation material
- Jaw Opening: 6mm

40% OFF

\$0.629

Order Code
116960402

MP002109 - DRILL BIT SET

multicomp^{PRO}



- 0.3/0.35/0.4/0.45/0.5/0.55/0.6/0.65/0.7/0.75/0.8/0.85/0.9/0.95/1/1.2/1.3/1.4/1.5/1.6mm sizes
- High speed steel metric drills
- Dispenses one drill bit at a time

30% OFF

\$20.33

Order Code
335069302

MP750064 - FUNCTION GENERATOR

multicomp^{PRO}



- 2MHz sine wave and pulse wave output, full band resolution of 1 μHz
- DDS implementation with 125MSa/s sampling rate and 14-bits vertical resolution
- 20 sets of non-volatile digital arbitrary waveform memory

10% OFF

\$263.95

Order Code
313026402

MP780052 - VOLTAGE TESTER

multicomp^{PRO}



- Thin probe tip for working with wall outlets
- LED light function on the rear
- Voltage detection indicated by sound and flashing, multicolour LED

20% OFF

\$19.88

Order Code
312662902

MP003076-EU - HEAT GUN

multicomp^{PRO}



- 220-240V voltage
- 50Hz frequency
- Features 3 heat settings (temperature not variable)

20% OFF

\$38.88

Order Code
338608502

MP004522 - TWIST DRILL BIT

multicomp^{PRO}



- Drill Bit Size: 2.5mm
- Effective length: 30mm
- Overall length: 57mm

40% OFF

\$0.51

Order Code
351431502

MP780649 - PRESSURE MANOMETER

multicomp^{PRO}



- Data hold function
- Auto power off
- Dual LCD display

20% OFF

\$106.11

Order Code
357358402

JR8001/0.5M BLACK - TEST LEAD

multicomp^{PRO}



- 4mm banana plug to 4mm banana plug, black
- 0.5m Black patch test lead
- High flexible cable

40% OFF

\$2.46

Order Code
428429002

MP000022 - SOLDERING TIP

multicomp^{PRO}



- Tip / Nozzle style: Knife
- Tip / Nozzle width: 6.2mm

20% OFF

\$5.64

Order Code
310674902

7827619 - LABEL

multicomp^{PRO}



- Tamperproof label with "warranty void if broken" legend
- 12mm x 38mm

40% OFF

\$0.989

Order Code
184531602

17034H96.005.GPB - STORAGE CASE**multicomp** PRO

- 340mm x 298mm x 96mm
- Polypropylene with foam

20% OFF**\$25.67**Order Code
266359302**MP001842 - BATTERY****multicomp** PRO

- 3.6V Lithium thionyl chloride battery
- Size code: 1/2AA
- Raised positive and flat negative

40% OFF**\$2.78**Order Code
328714402**MCW-70B - WATERPROOF COVER****multicomp** PRO

- For use with 20mm lever height toggle switches

40% OFF**\$0.88**Order Code
225112502**MF25 150R - THROUGH HOLE RESISTOR****multicomp** PRO

- Maximum working voltage of 250V
- Power rating of 250mW
- Tolerance of $\pm 1\%$

40% OFF**\$0.026**Order Code
934131502**MCWR06X1071FTL - SMD CHIP RESISTOR****multicomp** PRO

- 0603 (1608 metric) EIA size code
- Resistance is 1.07Kohm (E96/E24) with $\pm 1\%$ tolerance
- Maximum operating voltage (DC or RMS) is 75V and maximum dissipation at Tamb=70°C is 100mW

50% OFF**\$0.005**Order Code
269469302**GPL05 - PLASTIC ENCLOSURE****multicomp** PRO

- Grey ABS potting box with mounting flanges
- 19mm x 24mm x 36mm

40% OFF**\$1.06**Order Code
64564302**MP008557 - PUSHBUTTON SWITCH****multicomp** PRO**New**

- Double push button switch
- 22mm to 30mm cut-out
- 16A, 250V

40% OFF**\$4.10**Order Code
383394502**2N3440 - SINGLE BIPOLAR TRANSISTOR (BJT)****multicomp** PRO

- Silicon planar NPN transistor used in high voltage and high power amplifier applications
- Collector emitter voltage V(br)ceo: 250V
- DC collector current: 1A

45% OFF**\$0.906**Order Code
920704002**MCMF0W4FF1501A50 - METAL FILM RESISTOR****multicomp** PRO

- EIA standard colour-coding
- Non-flame type available
- Low noise and voltage coefficient

40% OFF**\$0.017**Order Code
112693702**MCSDRH73B-100MHF - POWER INDUCTOR (SMD)****multicomp** PRO

- Inductance: 10μH
- RMS current (Irms): 2.35A
- Saturation current (Isat): 2.5A

40% OFF**\$0.538**Order Code
186447502**MP3180 - KNOB****multicomp** PRO

- Slide with indicator line
- 8mm Slider Shaft

40% OFF**\$0.77**Order Code
325975802**1MS1T6B11M1QE - TOGGLE SWITCH****multicomp** PRO

- Epoxy seal
- 10mR maximum contact resistance
- 1000mR minimum insulation resistance

40% OFF**\$2.14**Order Code
947361002**2N5401 - BIPOLAR (BJT) SINGLE TRANSISTOR****multicomp** PRO

- Transistor Polarity: PNP
- DC collector current: 600mA
- Power dissipation Pd: 625mW

40% OFF**\$0.227**Order Code
186254202**MCMF0W8FF1002A20 - METAL FILM RESISTOR****multicomp** PRO

- EIA standard colour-coding
- Non-flame type available
- Low noise and voltage coefficient

45% OFF**\$0.015**Order Code
112701702**MCSD54-3R3MU - POWER INDUCTOR (SMD)****multicomp** PRO

- Operating temperature range: -55°C to 130°C
- Inductance: 3.3μH
- RMS current (Irms): 3.3A

40% OFF**\$0.358**Order Code
186411202

SPC23044 - DUPLEX FIBER OPTIC PATCH CORD

multicomp PRO



- Fibre Optic ST to LC
- Length: 2m
- Number of files: 2

20% OFF

\$23.66

Order Code
154627102

PP001189 - WIRE

multicomp PRO



- Single core black colour tri-rated, 14AWG flexible PVC equipment wire
- 2.5 mm² nominal cross section area
- Nominal thickness of insulation is 0.8mm

20% OFF

\$86.78

Order Code
250142802

PP001207 - WIRE

multicomp PRO



- 16AWG brown tri-rated flexible PVC equipment wire
- Nominal overall diameter of 3.3mm
- Cut to Length - supplied in continuous length in 1 metre multiples

40% OFF

\$0.886

Order Code
252810502

DB104S - BRIDGE RECTIFIER

multicomp PRO



- 25pF typical junction capacitance per element
- High current capability
- 280V maximum RMS voltage

45% OFF

\$0.277

Order Code
186140602

1N4740A - ZENER SINGLE DIODE

multicomp PRO



- High reliability
- Very sharp reverse characteristic
- Low reverse current level

50% OFF

\$0.113

Order Code
186145502

5501-25PA-02-F1 - D SUB CONNECTOR

multicomp PRO



- Current rating of 3A
- Voltage rating of 250VAC/DC
- Operating temperature range of -40°C to 85°C

40% OFF

\$0.599

Order Code
108467402

PP001295 - WIRE

multicomp PRO



- Tri-rated, 21AWG flexible PVC equipment wire
- Nominal overall diameter is 2.7mm
- 100m reel length

20% OFF

\$26.86

Order Code
250154502

79L15 - NEGATIVE VOLTAGE REGULATOR

multicomp PRO



- Fixed output voltage: -15V
- Primary input voltage: -20V
- Operating temperature: 0°C to 70°C

40% OFF

\$0.44

Order Code
464258202

UF2005 - FAST / ULTRAFAST DIODE

multicomp PRO



- Reverse voltage: 50V to 1,000V
- Forward current: 2A

45% OFF

\$0.057

Order Code
186149802

MCCC100V103KY5P - CERAMIC CAPACITOR

multicomp PRO



- Capacitance: 10000pF
- Capacitance tolerance: ± 10%
- Voltage rating: 100V

50% OFF

\$0.409

Order Code
160081402

PP001243 - WIRE

multicomp PRO



- Single core green/yellow colour tri-rated, 12AWG flexible PVC equipment wire
- Maximum temperature rating of 105°C
- 100m reel length

25% OFF

\$146.33

Order Code
250148802

PP001275 - WIRE

multicomp PRO



- Single core, red colour tri-rated flexible PVC equipment wire
- Wire size of 10AWG
- Cut to length - supplied in continuous length in 1 metre multiples

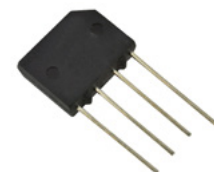
30% OFF

\$2.76

Order Code
252818002

KBP204G - BRIDGE RECTIFIER

multicomp PRO



- 60A peak forward surge current
- 280V maximum RMS bridge input voltage
- 400V maximum DC blocking voltage

45% OFF

\$0.383

Order Code
186141502

SMAJ4749A - ZENER SINGLE DIODE

multicomp PRO



- Zener voltage Vz Typ: 24V
- Power dissipation Pd: 1W
- maximum operating temperature: 150°C

45% OFF

\$0.198

Order Code
267521202

MCMLR50V104MX7R - CERAMIC CAPACITOR

multicomp PRO



- Capacitance: 0.1µF
- Voltage rating: 50V
- Tolerance: ± 20%

45% OFF

\$0.126

Order Code
160087602



OUR SERVICES

Take advantage of our local services



A global electronics distributor that provides you with local support
In person, via phone or online



Dedicated account management
Account holders will be assigned an individual account manager to help with your queries, product resourcing and orders



Quoting on volume requirements
Dedicated team to assist in quoting you the best possible price



Not in catalogue sourcing
When a product is not available in our range, our team can help you source it directly from the manufacturer



Contract pricing
Special pricing is available for eligible customers



Flexible scheduled ordering
Place an order now and opt to have it scheduled to be delivered at a later date



Exclusive buffer stock arrangements
Reserve stock now for a future order, available for qualified customers

Customer Service

0800 90 80 80

Monday to Friday 10:00 AM – 8:00 PM (NZST)

nz-sales@element14.com

Technical Support

For Account Customers Only

0800 90 80 83

Monday to Friday 10:00 AM – 8:30 PM (NZST)

nz-technical@element14.com

Account Enquiries

0800 90 80 88

nz-finance@element14.com

Quote Requests

0800 90 80 86

Monday to Friday 10:00 AM – 8:00 PM (NZST)

nz-sales@element14.com

Our Guarantee

Call **0800 90 80 80**, email **nz-sales@element14.com** or visit our website and complete the online RMA request form. Upon authorisation, you will need to return the product in its original packaging to: The Returns Department, 300 Richmond Road Grey Lynn, Auckland 1021, New Zealand. Few conditions apply. Refer to the element14 'Standard Terms and Conditions of Sale' available at **nz.element14.com/terms-and-conditions**.

Terms & Conditions

- All products shown in this issue of Connect (the 'Publication') are subject to availability and all sales of these products are subject to the element14 Standard Terms and Conditions of Sale as set out on the element14 website. To obtain a copy, call **0800 90 80 80** or visit **nz.element14.com/terms-and-conditions**
- The Publication is valid from **4th April – 1st July 2022**.
- All savings shown in the Publication are against the price on the element14 website (**nz.element14.com**) as of February 2022.
- Any further discount (special pricing, quote discounts, discount vouchers, etc.) is not applicable on Connect products.
- Prices in the Publication exclude delivery charges & GST. Prices are inclusive of any discounts referred to in the Publication.
- element14 reserves the right to withdraw any products from sale for legal or commercial reasons.
- Changes may be made to products by our suppliers.
- The products in the publication are meant for business customers and consumers. By ordering, the customers confirm that they wish to obtain the supplies for their business or personal purposes and not as a reseller.
- While every effort has been made to ensure the accuracy of information in the Publication, element14 does not warrant the accuracy or completeness of the information and accepts no liability for errors in, or omissions from the Publication, including those arising from our negligence.
- Standard 14 days Returns Policy does not apply to computers and peripherals, software, batteries, books and specially constructed items.
- Free next business day delivery for all orders over \$50 on locally stocked products.
- Same day despatch available only for 'locally stocked' products. Orders must be placed before 6 PM. Excludes weekends and Public Holidays.

INDUSTRY LEADING BRANDS

Ready for next business day delivery from our Sydney distribution centre

multicompPRO

3M Science.
Applied to Life.™

Amphenol®

KEMET
a YAGEO company

KEYSIGHT
TECHNOLOGIES

molex

muRata
INNOVATOR IN ELECTRONICS

onsemi

pico
Technology

ROHDE & SCHWARZ
Make ideas real

ST life.augmented

TE
AUTHORIZED DISTRIBUTOR

Tektronix®

TRACO POWER

WAGO



Shop our local Connect range at
nz.element14.com/connect38-local-stock